

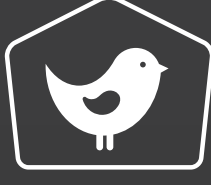
BROILER CATALOG

Comprehensive catalog for Big Dutchman broiler house equipment



Big Dutchman

WWW.BIGDUTCHMANUSA.COM



PAN FEEDING

FLUXX™ FX2

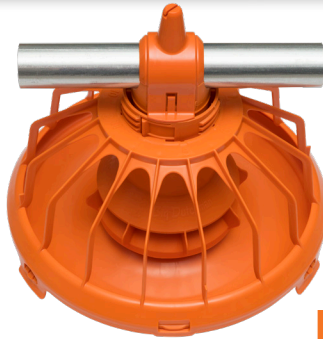
Broiler feed pan

The **FLUXX** broiler feeding pan system with **FX2** dish continues to set the standard in broiler feeding technology. The **FLUXX** system has been farm tested around the world, and has proven to be the best at faster starts and bigger birds.

The 14" pan allows for more feeding space, while the 16 arm design reduces feed waste and the 360° flood provides a consistent distribution of feed for easy access by your birds.

When a flooding pan is no longer required, simply winch the feeders off the floor and the feed adjust returns to the preset grow-out position. In the grow-out position the feed volume per pan is reduced.

Each pan features a feed saver lip and fins which work together to reduce waste, and the 360° rotation of the feeder ensures even feed distribution.



3 DAY OLD PULLETS



FULL GROWN BROILERS

VISTA 330

Broiler feed pan

The **VISTA 330** pan is a feed pan that will satisfy the needs of day-old pullets and on through the grow-out phase. For successful growing of broiler pullets, easy access to feed, minimal feed waste and simple, thorough cleaning functionality are key.

The Vista 330 has a unique grill-less design to provide your birds easy access to feed all the way around the pan. The feed dividers, along with the feed savings lip, reduces feed waste.

The pans feature an innovative 360° flooding mechanism to ensure a high feed level in the pan. The flooding mechanism can be activated centrally by lowering the feed line, keeping feed waste to an absolute minimum. There is only one feed level, so there is no accidental feed level change. The Vista 330 can also be combined with flat or deep dishes to fit your management needs.



FLUXTMFX2 COMPONENTS

Internal lip is designed to give big birds easy feed access without wasting feed or injuring birds.

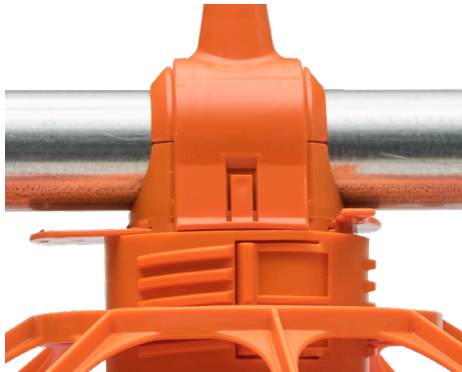


Feed levels are easily set with our "Spin'n lock" adjustment.

Preset grow-out adjustment is returned as soon as the system is winched off the litter, reducing labor.



Swinging pan yields less bird injury and is easy to clean. Simply spray clean, open the bottom and let dry.



Top cap snaps on for easy installation and service, saving time and maintenance costs.



Additional dish latch ensures the dish stays secured to the pan assembly.



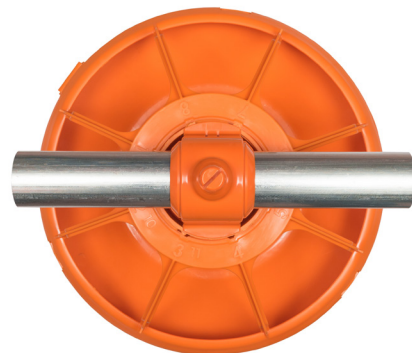
TRUfloodTM 360° high feed level flooding allows feed accessibility from day one.



Up to 16 feed stations are available, encouraging the birds to eat straight into the pan.



Pan spins 360° providing even feed distribution in the pan.



Heavy duty plastic construction creates a system that will last for years with minimal maintenance.

PAN FEEDING

FLUXX™ FX2GLO

Illuminated broiler feed pan

The next bright idea is here. As farm managers look for better ways to add light to their barns, Big Dutchman's **FLUXX FX2GLO** broiler feed pan offers a good solution for dimmable house lighting. The **FX2GLO** follows the performance proven design of the **FLUXX FX2** feed pan. It has an integrated LED light inside of the inner cylinder. Light placement inside the center column of the pan attracts the birds quickly to the feed so young birds have the best potential for a good and healthy start.



TRANSPARENT CYLINDER:

- Places light on feed, helping chicks find feed quickly
- Design allows light to be visible without being directly in contact with feed

LED LIGHTS:

- 48VDC protective low voltage for highest safety
- Resistant to high-pressure cleaning (IP69K)
- Flicker-free, dimmable LED
- Long lasting bulbs
- Easy to replace

EASY INSTALLATION:

- Components snap together for simple, quick and flexible install
- In addition to standard FLUXX 360 pan assembly, parts include clamp, LED light and ribbon cable



FEED DELIVERY

Every element of Big Dutchman's feed delivery system is designed for optimal performance and durability.



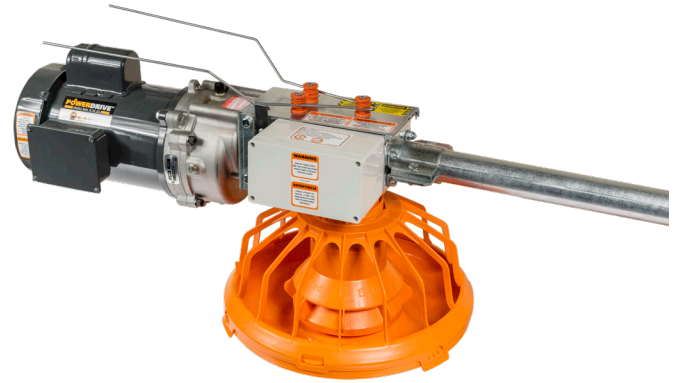
FEEDER AND HOPPER UNIT:

- Galvanized steel and heavy-duty plastic available
- Permanently lubricated, sealed bearings give the unit an exceptionally long life
- Removable 165lb plastic hopper extension allows the unit to be winched up until the feeder reaches the desired height for easy clean-out
- Lower limit hopper switches ensure feed availability at startup



AUGER AND TUBE:

- Constructed of high-quality flexible spring steel with smooth flighting for long tube life and high energy efficiency
- Heavy-gauge construction of the tube prevents twisting, wear, and feed entrapment
- Feed drop-out holes handle most types of feed with no separation of ingredients



DRIVE UNITS:

- The POWERDRIVE motor features enhanced reliability with a **2 year warranty**
- High speed gear boxes (657 RPM) ensure rapid feed delivery
- Micro-switch control pan for consistent run times



STABILIZER HANGER AND TUBE:

- Stabilizer hanger prevents feed lines from rotating
- Retrofit any feed pans (including competitors) to the tubing

PROXIMITY SWITCHES:

Proximity sensors detect the feed level in hoppers, feed pans, bins, and are used for the control of poultry feed lines. Our sensors are customizable to adjust the desired time delay and sensitivity settings.



FEED STORAGE

Reliable Big Dutchman components make the system complete, with bins and accessories for hygienic feed storage.

Feed hopper bins are available in 3 standard sizes of 6, 9, and 12 feet in diameter. The **6'** bin is available in 1-4 rings, the **9'** bin is available in 1-6 rings, and the **12'** bin is available in 2-6 rings.

The bins are designed to store flowable, noncorrosive material with 40 pounds/cubic foot (640.7kg/m³) capabilities.

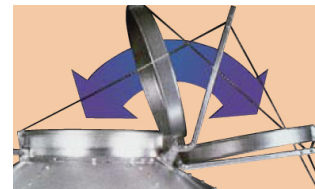
FLEX-VEY® AUGER FILL SYSTEMS:

- Carry feed from feed bins to the house, moving up to 17,000 lbs. (7,700 kg) of feed per hour
- Single or tandem bin installations and single or double systems
- Customized to meet your needs
- High quality and extremely flexible spring steel
- Feed can be transported into the house around bends of up to 90° safely, quickly and without feed separation
- Universal application for each type of house
- High conveying capacities



CONVENIENT AND SECURE ACCESS:

Big Dutchman feed bins feature the exclusive, patented Auto-Lok ground control access system for opening, closing and latching the fill cap safely and easily from the ground. Our cap system comes completely factory assembled, saving significant time and trouble in installation.



The cap swings open a full 180° to lie flat and parallel to the ground, completely eliminating interference with, or damage to, the cap from the auger.

Feed bins also feature an optional hopper valve for accessing small amounts of material to a location not serviced by the auger system.

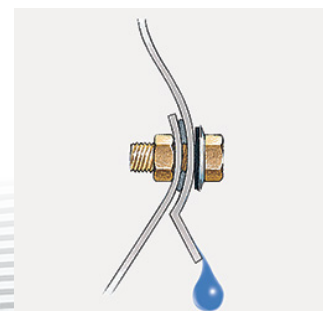
FEED WEIGH SCALES:

- Dependable, accurate scales for outside use
- Available in capacities of 5,000 lb. (2,300 kg) and 10,000 lb. (4,600 kg)
- Scale, feeder, and extension combination offers an alternative feeding system used inside the building



DRIP LIP:

Big Dutchman's drip lip water deflection system is a one-of-a-kind, roll-formed bottom sheet edge. It forces water away from running down the hopper and lower boot area, keeping water away from the tank seams.



BIN ROOF:



Roof cap opens a full 180 degrees to prevent any interference with fill equipment. A standard ground control kit allows you to safely open and close the lid from the ground.

Roofs feature reinforcing ribs at each roof seam. Weather tight connection of the roof to the sidewall prevents moisture from entering the bin, keeping your feed protected from moisture.



Reinforcing Rib

HOPPERS:



Bin hoppers are available in a 60° angle with truss head bolts to unload heavy feed and prevent it from getting caught on hardware and causing bridging events.

Hopper panels are die-formed with rounded corners and sealed edges down-turned for a weather-tight fit. Rounded, truss-head bolts reduce bridging of contents on inner surface. The eave is die-formed to conform to the shape of the sidewall corrugation. GSI's drip lip water deflection system is a one-of-a-kind, rollformed bottom sheet edge which forces water away from the hopper and lower boot area.



Multiple outlet requirements can be easily handled by the 22" (559 mm) all metal boot. This boot, which can be fitted to any hopper tank, will allow installation of up to four feed lines in several directions at once.

BINTRAC:



BinTrac® is a remote bin weighing system that provides real-time bin inventory by weight and 24-hour feed usage tracking. It installs easily on new or existing bins using a patented load cell bracket assembly and requires no calibration. It can support single-bin setups or scale across multiple sites with remote monitoring capabilities—built for flexibility and long-term performance.



DRINKING



To achieve optimum performance from your birds, it is extremely important to provide fresh and clean drinking water. A reliable water supply free from contamination and within easy reach of the birds must be available. Big Dutchman satisfies all these requirements with chemical-resistant stainless steel nipple-drinkers for both adult birds and pullets.

For young birds, a soft triggering of the pin allows smaller volumes of water, and as the birds age, more aggressive triggering releases larger amounts of water. This level of precision ensures your flock is consuming the necessary amounts of water that are critical for each stage of their life for peak performance.

IMPORTANT ADVANTAGES:

- Exact water metering at every age
- Simplistic design
- Square pipe advantage
- Trouble-free performance
- Aluminum rails or conduit
- Simple and quick assembly
- Raised water entry point
- Large surface area for water entry
- Optional LitterGard cups

FAST START



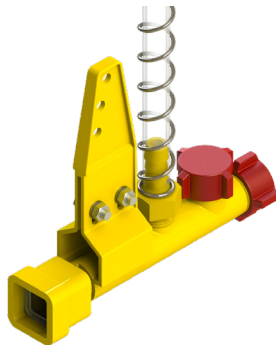


OPTIMA E-FLUSH PRESSURE REGULATOR:

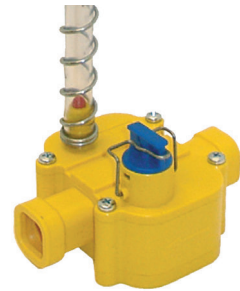
The Optima E-Flush pressure regulator has built-in flushing capabilities with a simple half twist of a knob. Water pressure is easily adjusted with the regulator knob located underneath the unit. The clear flexible standpipe with float ball offers accurate reading of water pressure.

FLUSH BREATHER UNIT:

The flush breather unit incorporates a clear flexible standpipe and float ball for establishing an accurate water pressure adjustment, and also includes hose attachments for automatic flushing and cleaning.



SLOPE REDUCER:



The patented slope reducer effectively adjusts water pressures on the drinking line in buildings with sloped floors. Slope reducers are available in 4", 6", and 8" slope increments.

An adjustable slope reducer is available and can be adapted to the slope specific at your farm.

BIG FINISH



TITAN Fan

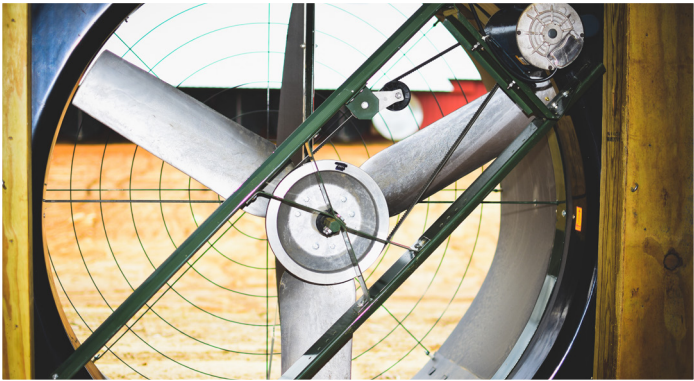
A flush mount fiberglass housing design allows for long lasting durability against the harshest environments, along with easy installation for new construction or for updating existing poultry houses.

All internal fan components are made from stainless steel, aluminum, or metal that has been through a high temperature painting process. These rugged components are added to a newly engineered blade assembly consisting of three cast aluminum blades that are secured to a cast aluminum hub.

The HDPE damper doors and poly cone allow for less airflow restriction than other fans on the market, while at the same time giving you complete protection against the elements of “mother nature.” The innovative drive assembly applies power through the belt directly to the propeller.

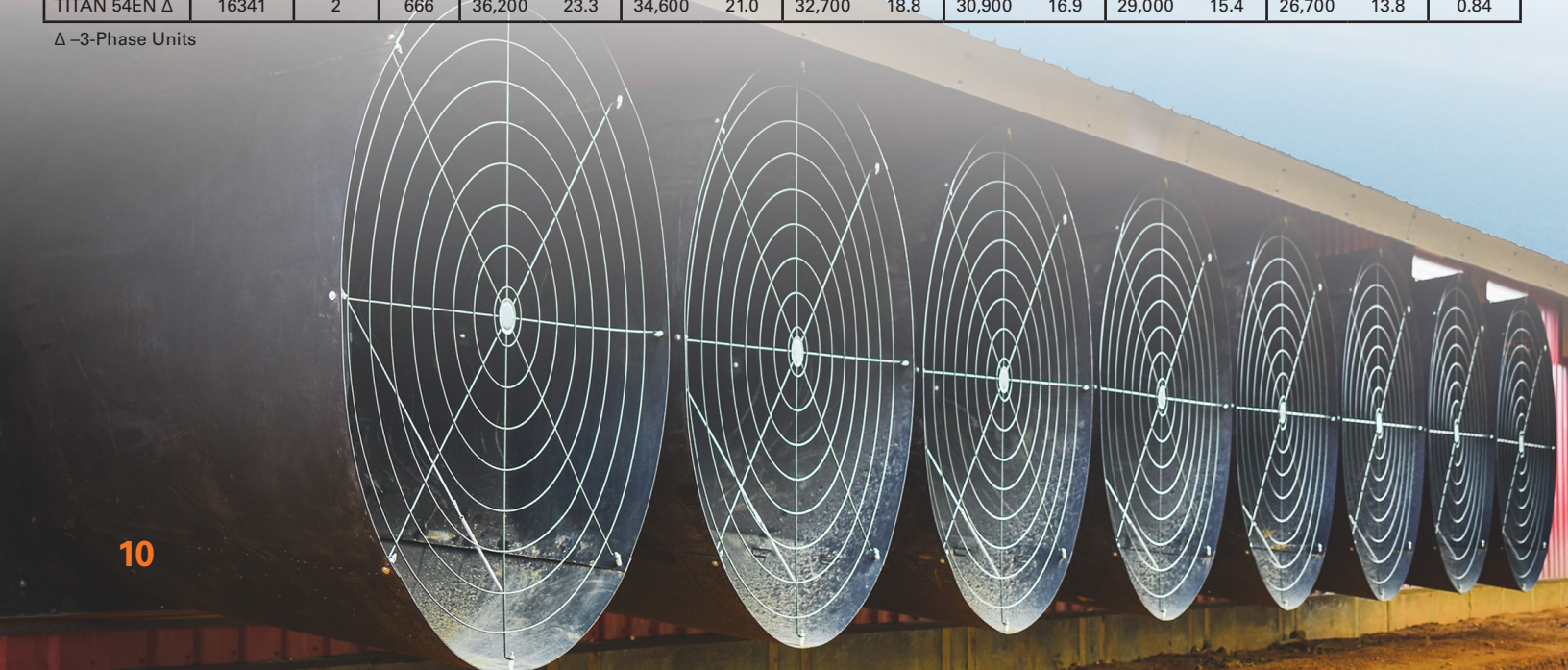
The blade load is concentrated over the bearings for more economical operation and longer bearing life.

The **TITAN** 54” is available in 1hp or 1.5 hp options along with 3 phase availability and is ready to be packaged in your next Big Dutchman poultry project.



				Cubic Feet per Minute (CFM) at Static Pressure												
Fan Model	BESS Lab Test #	Motor HP	Fan RPM @ .05"	0" S.P.		.05" S.P.		.10" S.P.		.15" S.P.		.20" S.P.		.25" S.P.		Air Flow Ratio
				CFM	CFM/Watt	CFM	CFM/Watt	CFM	CFM/Watt	CFM	CFM/Watt	CFM	CFM/Watt	CFM	CFM/Watt	
Exterior Mount FG Fan with Damper Door Discharge Cone & Guards																
TITAN 54L	16344	1	548	29,800	31.3	27,800	26.7	25,500	22.9	23,100	19.7	20,400	16.9	17,200	14.4	0.73
TITAN 54M	16346	1.5	592	32,200	27.2	30,400	23.9	28,300	21.0	26,200	18.5	24,000	16.3	21,100	14.2	0.79
TITAN 54L Δ	16343	1	554	30,100	33.5	28,100	28.9	26,000	24.9	23,700	21.5	21,200	18.6	18,100	16.0	0.75
TITAN 54M Δ	16340	1.5	595	32,500	29.6	30,800	26.1	28,700	22.7	26,700	20.1	24,300	17.6	21,600	15.4	0.79
TITAN 54N Δ	16342	2	625	33,900	26.1	32,100	23.2	30,300	20.7	28,300	18.5	26,200	16.4	24,100	14.7	0.82
TITAN 54EN Δ	16341	2	666	36,200	23.3	34,600	21.0	32,700	18.8	30,900	16.9	29,000	15.4	26,700	13.8	0.84

Δ –3-Phase Units





WM Fans

RELIABLE DESIGN REDUCES MAINTENANCE COST AND PROVIDES EFFORTLESS INSTALL:

- Powder-coated galvanized steel and stainless steel hardware reduces maintenance and provides continuous strong performance
- Powder-coated galvanized motor mount strut and brackets
- Simple design for easy assembly, installation, and maintenance

DURABLE FOR LONG-LASTING PERFORMANCE:

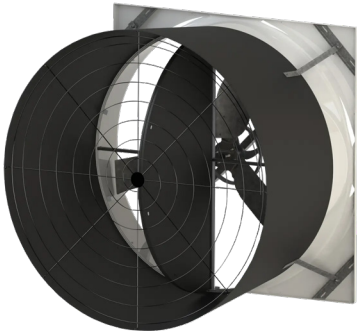
- Rigid and durable fiberglass housing
- Polymer UV-protected cone with stainless steel hardware for durability and easy installation
- Damper door designed to insulate, seal tight, and reduce condensation
- Inlet guard mounts flush with inside of building frame
- Upgraded motor and drive designed for years of trouble-free ventilation

Performance

		WM36 Single Phase, .75hp, 230V WM367K1CB	WM54 Single Phase, 1.5hp, 230V WM5415K1CB	WM54 Munters Drive Single Phase, 230V WM54DK21CB-HO
	RPM	987	564	600
0.00" SP	CFM	12,400	32,500	34,200
	CFM/Watt	21.5	24.1	23.3
0.05" SP	CFM	11,800	30,900	32,800
	CFM/Watt	19.5	21.8	20.9
0.10" SP	CFM	11,200	29,200	31,200
	CFM/Watt	17.5	19.5	18.9
0.15" SP	CFM	10,500	27,200	29,500
	CFM/Watt	15.2	17.7	16.9
0.20" SP	CFM	9,900	25,100	27,700
	CFM/Watt	13.6	15.5	15.1
	Airflow Ratio	0.84	0.81	0.84
	Lab Test	20280-01 [°]	15182*	16950*

[°] Tested in accordance with AMCA Standard 210

* Certified Bess Lab Test



RainMaker

Evaporative pad cooling system

- Hygiene optimized: use of high-pressure cleaners possible to wash off dirt or deposits
- Standard pads are 6" thick, 23-1/2" wide
- Length options: 3', 4', 5', 6', 7' and 10' (other sizes on request)
- Weight: 2.25 lbs /sq ft (11 Kg/m2)
- Operating range: from -4°F to 176°F (-20° C to +80°C)
- UV-resistant
- Recyclable

Plastic cooling pads require a high volume of water, Big Dutchman highly recommends the use of these pads exclusively with its **RainMaker** system. Use of these pads in any other cooling system may severely limit performance. Plastic pads weigh more than cellulose pads and therefore require additional support.

This product has a cooling performance that is inherent to this type of technology. The manufacturer neither claims nor warrants that its performance is comparable to any other cooling technology.

Plastic pad option



Radiant Brooders

SOLAIRE™ LOW PRESSURE BROODER



OPTIONAL ZONE CONTROL SYSTEM:

A power pack is available to provide automated battery back-up. Zone Control is available with Solaire™ single-jet or infrared brooders. The optional Zone Control System (24V AC/12V DC) electronically controls a group of brooders using one thermostat.

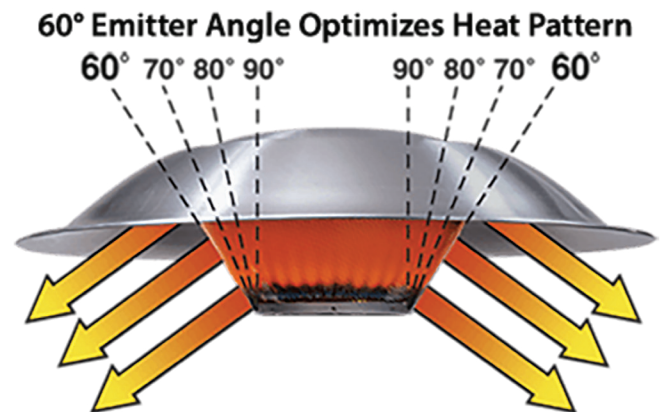
DIRECT SPARK IGNITION SYSTEM:

Direct spark ignition eliminates standing pilots and provides electronic control of a group of brooders. Direct spark ignition is available on single-jet and infrared brooder models. The system requires a transformer.

SIMPLE TO USE AND EASY TO CLEAN:

Assembling a Solaire™ brooder requires only a wrench and a screwdriver. The simplified control mounting eliminates bulky clips or wires, and the DSI box is sealed to allow for more protection and thorough washdowns.

TRU40 HIGH PRESSURE BROODER



FEATURES AT A GLANCE:

- Stainless steel emitter assembly, insulated and uninsulated – will not crumble or distort. Features 3-year limited warranty
- Stainless steel, corrosion resistant burner assembly features simple disassembly for easy cleaning and maintenance
- Stainless steel main burner gas line for strength and durability
- Large deep dish aluminum canopy to efficiently reflect heat to litter area where it's needed most
- Ignition Control features a moisture resistant enclosure
- Safety pan below burner helps shield litter area directly beneath brooder
- Low profile mounting bracket permits easy leveling of brooder
- No filter needed
- Ideal for replacement of existing high pressure brooders

Radiant Tube Heaters

Our Radiant Tube Heaters provide a broad, even heat footprint that promotes consistent bird growth. With an extra-wide rectangular heat pattern at litter level, they deliver more uniform heat distribution throughout the poultry house. Better brooding conditions mean greater comfort, and better results, for your birds.

BIGFOOT TUBE HEATER



19° OPTIMIZED REFLECTOR ANGLE:

- Better radiant throw
- Less convective wash
- Higher radiant output and more fuel efficient
- Faster to put heat on the floor
- Low clearances to combustibles above
- Unique U-bend reflector directs more heat from the end of the tube

FUSION TUBE HEATER

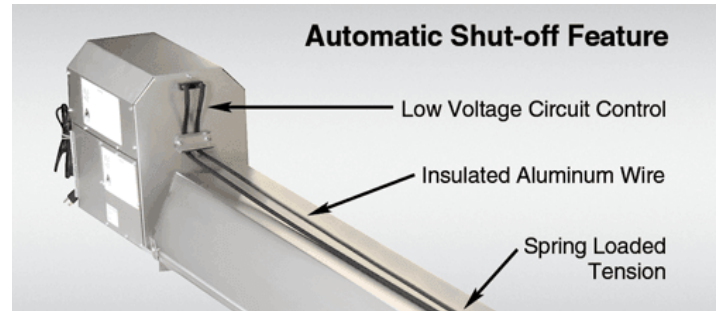


TUBE INTEGRITY SAFETY:

This system uses a simple principle to place an electrically insulated aluminum wire in tension above the reflector. Low voltage is then continuously passed along the wire in line with the gas control circuit. If heat levels increase due to heat exchanger failure, the wire melts and the safety circuit is broken, breaking the 24 volt circuit and shutting down the heater.

HEAT PATTERN:

- Even temperature distribution
- Allows birds warm access to food and water
- 4" diameter tubes create large radiant surface to emit heat to the outside wall
- Bigger footprint than other competitive units



- An energy efficient radiant heating system that saves fuel, reduces maintenance and permits higher mounting
- Calorized aluminized steel emitter tubes for corrosion resistance and greater radiant output
- Unique diagnostic monitoring lights show when heater is operating, and assists with fault diagnosis
- Ceiling stays cool – no need for insulated board above heater.**
- CSA design certified for safety
- Excellent radiant throw and even temperature distribution
- 4" diameter tubes create a large radiant surface to emit more heat over a wide rectangular area
- Each unit comes with fresh air intake kit, exhaust hood, stainless steel flexible gas connector and a pre-wired electrical connection
- Features a 3-year limited warranty on complete emitter assembly

**Provided minimum clearances-to-combustibles are maintained



WEIGHING

Precision weighing systems for all types of poultry – mobile or fixed installation

Monitoring bird weights is an important tool in modern poultry management. Especially in poultry growing, the exact determination of bird weights is a decisive factor for economic success.

Swing 20

Versatile poultry scale

Swing 20 consists of a load cell and a platform made of plastic material (or, as an option, stainless steel).



MAIN ADVANTAGES:

Using the telescopic suspension, the platform can easily be adjusted in height and thus be adapted to the birds' age. The birds accept the scale well, resulting in plenty of weighings and therefore precise weight data.

Swing 20 is suspended from the barn's ceiling. During the service period, the scale can easily be removed for cleaning while the weighing electronics remain installed close to the ceiling where they are protected against dirt.

FlexScale2

Portable user-friendly mobile poultry scale

FlexScale2 is a portable and very user-friendly mobile poultry scale. It allows you to take multiple measurements and assign them to the respective house as needed. Thanks to its special features, the scale can be easily adapted to everyday work. The weighing results can be read out and saved via a web interface via smartphone or PC software. A server connection is also possible.



FEATURES AT A GLANCE:

- Portable and user-friendly
- Concise display
- Large memory
- Long battery life
- Data can be saved and assigned to groups as needed
- Results can be saved via a web interface via smartphone or PC software
- Two versions available: 22 lbs or 88 lbs (with case)



LIGHTING

Zeus LED

Professional LED ceiling lamp

A customized lighting concept significantly contributes to the success of your farm. The **Zeus LED** evenly illuminates all areas of a poultry house, and is offered as a 1 or 2 channel lamp, which is an exclusive brand product.

Zeus LED can be used for multiple purposes due to the LED technology and a wide optical spectrum. Energy savings of up to 50 percent compared to conventional moisture-proof lamps are an unbeatable advantage.



FEATURES AT A GLANCE:

- LED technology allows for long-lasting energy savings of up to 50%
- 0 to 100% dimmable
- Zero flickering even at low light intensities
- Wide optical spectrum from warm white to cool white, infinitely variable
- 2-channel moisture-proof LED lamp, e.g. to simulate sunrise and sunset
- Modular design consisting of a power supply unit, an LED driver and LED lamps
- Long service life of 50,000 hours and low maintenance requirements
- Rugged aluminum housing with an ingress protection rating of IP 65
- Exterior heat sink for optimum cooling
- Diffuser (optional) reduces dazzle effects, especially with low ceiling heights
- Can be installed at walls, ceilings or tubes



CONTROLS AND SENSORS

ViperTouch

Climate and Production Computer – complete climate and production control for your poultry house... at your finger tips



The **ViperTouch** is a state-of-the-art climate computer that allows you to control the entire house efficiently.

ViperTouch is a full production and management computer. It records all important data concerning production, growth, feed and water consumption, and mortality, allowing you to react quickly to changes and to take the required action for better results.

The extension modules “full broiler functionality” and “full breeder functionality” provide additional functions which are especially important for broiler and broiler breeder management.

FEATURES AT A GLANCE:

- Simple operation via touch screen
- Ideal climate and production computer for all types of poultry production
- Adjustable operating modes: Basic, Flex or Profi Mode
- Speaks 16 languages – including yours
- Customizable home screen
- Integrated network interface
- Simple alarm management
- BigFarmNet-Manager with mobile and web access

BFN Fusion

The digital platform for maximum efficiency on your farms



Just as we once navigated the oceans using the stars, data can now help you optimize the results of your livestock operations.

Big Dutchman's new cloud-based software innovation with IoT technology is game-changing. It bundles all data generated by your farms – from controllers not limited to the Big Dutchman brand – and adds relevant value to your production, making it easier than ever to predict issues and make decisions.

FEATURES AT A GLANCE:

- Allows full control and maximum security
- Lowers costs and increases efficiency, achieving predictable success
- Eliminates human error, reduces the staff workload
- Reduces production risks
- Creates complete and secure documentation
- Helps reduce diseases and minimize losses
- Grants maximum flexibility and capability to act quickly

DOL 53

The first NH₃ sensor for continuous measuring of the ammonia concentration in the house air

DOL 53 provides exact figures on the NH₃ concentration in the house air at all times so you can immediately take suitable measures to reduce the ammonia content when necessary, because only healthy animals can show their full potential!

DOL 53 permanently monitors the ammonia concentration in the house air, allowing the house climate to be controlled based on the sensor's measurements. Our **ViperTouch** climate computer can receive and process the data provided by the sensor to regulate the house climate according to the measured values.

FEATURES AT A GLANCE:

- Exact and continuous measuring of the NH₃ concentration in the house air
- Measuring range covers concentrations typical for livestock production
- Easy integration into existing houses and their climate control systems
- Robust and reliable
- Easy to install
- Analogue 0 to 10 V output



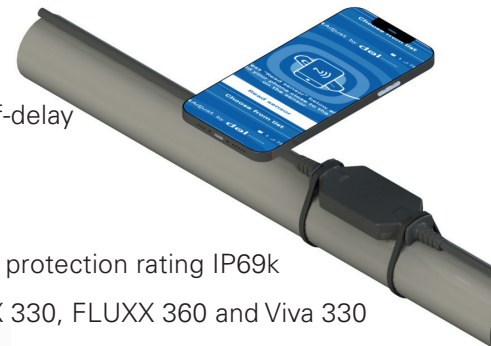
iDOL 29

Control pan feed level sensor with adjustable lighting

The **iDOL 29** feed level sensor detects feed in the control pan and automatically starts the feed line when the pan is empty. It also includes an integrated LED light to illuminate the feed in the pan. Farmers can easily operate the sensor settings such as lighting duration or switch-off delay using a mobile phone application.

FEATURES AT A GLANCE:

- The integrated LED light in the pan serves to attract birds to the pan more than to non-lit pans – allowing the control pan to automatically refill the system when needed
- Simple control via App "SmartAdjust"
 - Adjust On-delay / Off-delay
 - Adjust Max. runtime
 - Adjust LED light
- UL & CE approved with protection rating IP69k
- Compatible with FLUXX 330, FLUXX 360 and Viva 330 feed pans





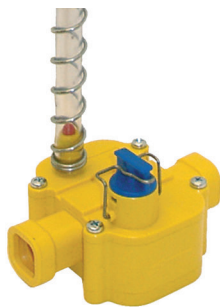
BROILER CATALOG

You want to produce healthy broilers; Big Dutchman offers the entire solution to help you do just that. From high quality and proven pan feeding and drinking systems to equipment to manage house lighting and climate, look no further. Whatever your needs are, Big Dutchman's network of authorized distributors are ready to assist you with your broiler house equipment needs.



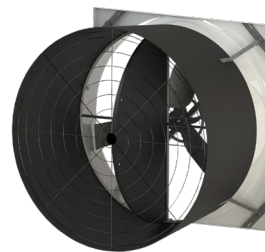
EFFICIENT FEEDING

Get healthy birds, excellent feed conversions and flock uniformity with advanced broiler feeding technologies.



RELIABLE WATER SUPPLY

Achieve optimum performance from your birds by giving them reliable fresh and clean drinking water.



EFFORTLESS CLIMATE CONTROL

Maintain perfect climate conditions for your broilers easily with a wide selection of heating and cooling options.



Big Dutchman.

WWW.BIGDUTCHMANUSA.COM

info@bigdutchmanusa.com

+1-616-582-4000

Find your authorized distributor at bigdutchmanusa.com

Details are subject to change: 12/2025