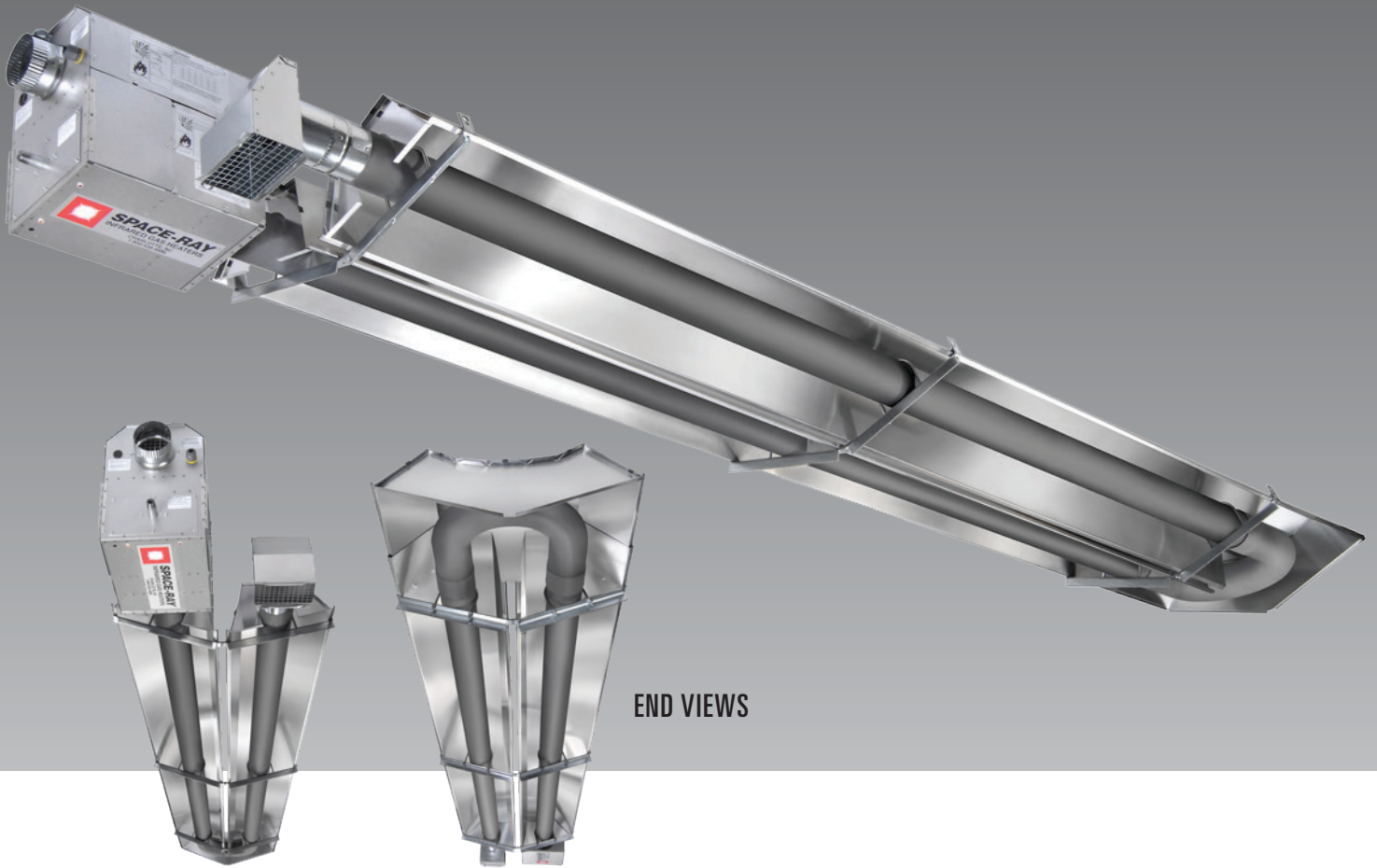




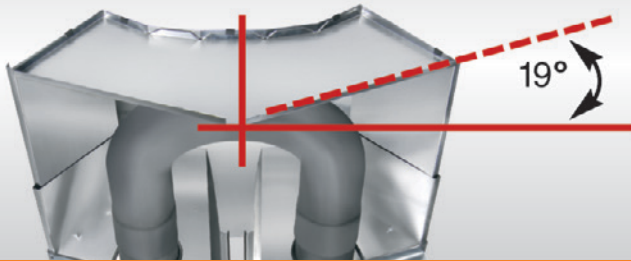
Big Dutchman®



BIGFOOT

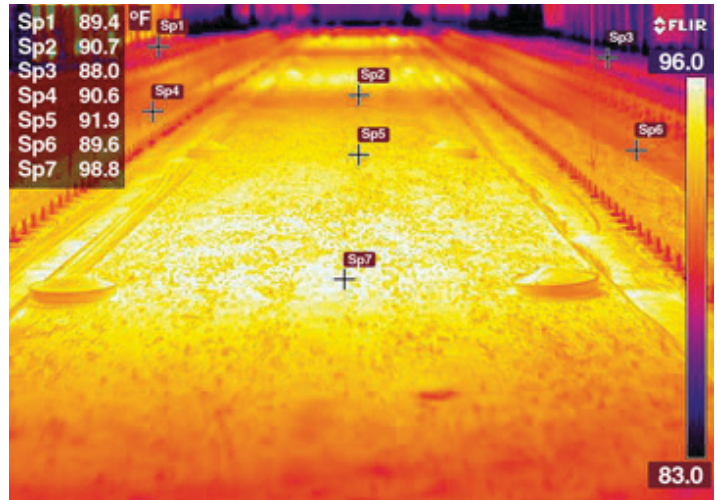
Tube Heater

Our Angle Is On Performance And Quality



19° ANGLE OPTIMIZED REFLECTOR ANGLE:

- Better radiant throw
- Less convective wash
- Higher radiant output and more fuel efficient
- Faster to put heat on the floor
- Low clearances to combustibles above
- Unique U-bend reflector directs more heat from the end



HEAT PATTERN

- Even temperature distribution
- Allows birds warm access to food and water
- 4" Diameter tubes create large radiant surface to emit heat to the outside wall
- Bigger footprint than other competitive units

Model	Single Stage BTU/HR Input	Two Stage BTU/HR High Input	Two Stage BTU/HR Low Input	Min Mounting Height
PBF60	60,000	60,000	40,000	8'
PBF70	70,000	70,000	45,000	9'
PBF80	80,000	80,000	55,000	9'
PBF90	90,000	90,000	60,000	9'
Control Suffix	Gas Type	Control Option Description		
N5/L5	Natural/Propane	Single Stage Gas Valve - Single Stage Input		
N7/L7	Natural/Propane	Two Stage Gas Valve - Modulating Input - High/Low Fire		

PROVIDES A LARGE, EVEN HEAT FOOTPRINT, THUS PROMOTING IMPROVED BIRD GROWTH

Big Foot delivers a large, extra wide, rectangular heat pattern at litter level.

This means more uniform heat distribution for your poultry house.

Better brooding conditions means more comfort for your birds.

- Unique U-Bend reflector improves heat throw from end of tube.
- 4" diameter tubes create a large radiant surface to emit more heat over a wide area.
- Each unit comes with fresh air intake kit, exhaust hood, stainless steel flexible gas connector and a pre wired electrical connection.
- Each unit is pre-assembled for easy installation.
- Includes TISS™ (Tube Integrity Safety System) Space-Ray's patented innovative safety system. In the unlikely event of a tube failure, TISS™ has been designed to automatically shut off the heater, providing greater safety and peace of mind.
- Rectangular pattern conforms to shape of poultry house.



Big Dutchman®

For USA, Canada and South America please contact:

Big Dutchman, Inc. - USA

3900 John F Donnelly Dr • Holland, MI 49424 • USA

tel +1 616 582 4000 • fax +1 616 392 6188

www.bigdutchmanusa.com • info@bigdutchmanusa.com

Technical details are subject to change.

11/2020

86-00-6139