



Big Dutchman®



Sow Management

Modern housing and feeding systems

Successful sow management – but how?

Achieving an increase of sow performance to more than 30 weaners per year is not easy, but it is possible. By supplying the right housing and feeding systems, Big Dutchman can provide you with the technical conditions needed to do so.

In modern sow management, the correct housing and equipment plays an important role for economic success. Big Dutchman is able to deliver the right equipment tailor-made to the requirements of every customer. Whether it is a

new house or refurbishment of existing houses, our specialists will work with you to develop the ideal concept for successful and animal-friendly piglet production.

Service centre with separate boar pen and sow stalls

The service centre is the starting point for the production of healthy piglets. In order to achieve optimum boar performance, the sows have to be in top condition. In

addition, the room should be light and the boar should easily be able to stimulate the sows. Sows in stalls can be monitored com-

fortably and controlled individually. There is no aggression during feeding. Artificial insemination can easily be carried out.



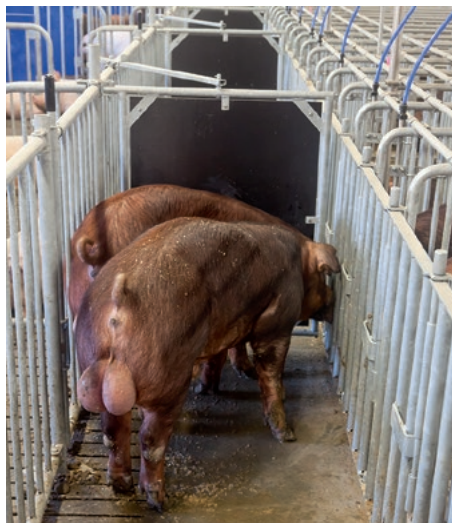
Service centre with stalls and boar-restraining doors



Service centre with separate boar pen



Stall with P-door for trouble-free insemination



Boar-restraining door to lock the boar in place

The BD stall is equipped with a P-door (available with a width of up to 750 mm). Both door parts can be opened individually to the outside and the inside, thus facilitating insemination. 360° rotating stainless steel feet make for easy mounting on the concrete slatted floor and provide corrosion protection. If a raised stainless steel trough is installed, the sows can rest their heads underneath the trough. In addition, thorough cleaning is made much easier. If a boar-restraining door is used, the boar can be retained in the inspection aisle to stimulate the sows during insemination.

Waiting area

Modern housing systems for pregnant sows

Group housing of sows improves their well-being as well as their constitution. There are several housing and feeding

systems available from Big Dutchman. The most important factor is that the

selected system fits your farm's individual requirements.

1. Group pens – a simple and economic solution



View into a waiting area with group pens and liquid feeding system

Advantages

- ✓ all sows eat at the same time;
- ✓ the farm manager can easily supervise his stock while the sows are feeding;
- ✓ the sows do not need a training phase;
- ✓ forming sow groups with identical constitution is very simple;
- ✓ feeding space width of 45 to 55 cm per pig;
- ✓ simple pen arrangement;
- ✓ cost-effective solution.

2. Group housing with single stalls

Where single stalls are used, the door behind the sow is opened and closed

manually by the service personnel. When the stall is open, the sows can move

around freely in their group.



View into a waiting area with single stalls

Advantages

- ✓ all sows have a separate feeding place where they can eat without being interrupted;
- ✓ no aggression during feeding;
- ✓ good monitoring conditions for every sow, not only during feeding, as each stall can be locked;
- ✓ manual individual feeding by means of volume dispensers if a dry feeding system is installed;
- ✓ can be used both in the service centre and in the waiting area.

3. Group housing with free-access stalls “BD” and “Easy Lock”

The free-access stalls “BD” and “Easy Lock” developed by Big Dutchman provide sows with the advantages of animal-friendly housing and the farm staff with the advantage of optimal working conditions. They can be used in the service centre and in waiting areas. The sows can move freely in their group

in both systems, but receive their feed in stalls. This provides every sow with her own feeding place where she can eat without being disturbed.

This has the following advantages:

- ✓ all sows can eat simultaneously
→ no stress during feeding;
- ✓ protection against more aggressive

sows → the stall acts as safe retreat for individual sows;

- ✓ ideal monitoring conditions for every sow since the stalls can be locked individually or altogether;
- ✓ high comfort provided for both the service personnel and the sows.

Free-access stall “BD”

When the sow enters the open stall, the door locks behind her and opens again as soon as she wants to leave the stall. The stall cannot be opened from the outside by other sows.



Free-access stall “BD” open: The sow enters the stall and closes it by herself



Stall closed: The sow has easy access to the trough



View of a waiting area with free-access stall “BD”



Integrated insemination door



Easy access to the pig

Advantages of the free-access stall »BD«

- ✓ the front and door elements operate as an up-and-over door;
- ✓ integrated insemination door → simple insemination and pregnancy check;
- ✓ open design of the stall → good overview for the farm staff;
- ✓ the individual locking device can be operated at the front or at the back of the stall;
- ✓ group locking function (optional);
- ✓ the vertical arrangement of the bars in the front part of the stall reduces the danger of sows turning inside the stall, especially important for gilts;
- ✓ rubber noise absorbers for quiet opening and closing of the stall → low noise level;
- ✓ rugged design;
- ✓ available in two different widths (inner width: 650 and 700 mm).



Free-access stall "Easy Lock" – the sow enters and leaves the stall through a swinging door

Advantages of "Easy Lock"

- ✓ the sow enters the stall through a swinging door;
- ✓ easy to use;
- ✓ only minimal mechanics;
- ✓ special insemination door (optional) for easy monitoring, e.g. pregnancy checks;
- ✓ adjustable width (650 to 750 mm);
- ✓ good price/performance ratio.

4. Call-Inn^{pro} and CallMatic^{pro} – electronic sow feeding (ESF) on demand

Call-Inn^{pro} and **CallMatic^{pro}** are feeding systems for pregnant sows kept in groups. The advantages of animal-friendly housing and individual feeding adapted to suit each individual animal are ideally combined.

Individual, computer-controlled feeding means that the supplied feed is precisely adjusted to the sow's condition. Both systems are ideally suited for new houses as well as existing ones.

A separate leaflet provides more detailed information.



View of a waiting area equipped with the computer-controlled ESF station Call-Inn^{pro}

Advantages Call-Inn^{pro}

- ✓ group housing of max. 64 sows per station;
- ✓ designed as dry feeding system with one feed type;
- ✓ very precise feed metering;
- ✓ complete trough unit made of stainless steel;
- ✓ colour-marking (1 colour, option);
- ✓ entrance door and trough flap open and close pneumatically;
- ✓ use of sound-absorbing materials → low noise level inside and around the station;
- ✓ reliable BigFarmNet control.

The station computer has a clearly arranged display and shows important information such as the number of visits to the station, the amount of feed consumed and the current status of the identified sow. Another advantage is the fact that the station computer no longer has to be installed at the ESF station but can also be installed in the aisle. This

makes for better accessibility (animal-free area) so that adjustments are easily possible.

CallMatic^{pro} station computer in the aisle





View of a waiting area equipped with the computer-controlled ESF station CallMaticpro

Advantages of CallMaticpro

- ✓ group housing to a maximum of 64 sows per station;
- ✓ can be used in combination with a dry or liquid feeding system;
- ✓ station computer for every station;
- ✓ automatic selection (optional);
- ✓ heat detection (optional);
- ✓ Bluetooth antenna as mobile management support (optional);
- ✓ freely programmable feed curves are visualised at the PC;
- ✓ sow manager;
- ✓ colour marking (optional);
- ✓ practical BigFarmNet control.

Farrowing area

with farrowing crate, plastic flooring, piglet nest and heated resting area

Farrowing pens have to provide ideal conditions both for the sow and for the piglets during their first weeks of life. For this purpose, Big Dutchman has a wide range of products available. The penning system is very flexible and since it does not depend on length measures, it is possible to create any desired pen shape. The partition of the pen can have a height of 500 or 600 mm.

The plastic flooring ensures good manure penetration and does not have any sharp corners or edges. It can be cleaned easily and can be combined with solid plates, cast iron slats and heating plates for the piglets. Depending on the housing concept, the crates can be arranged straight or diagonally.



Diagonal self-supporting farrowing crate

Important features

- ✓ all farrowing crates can be adjusted in width and length;
- ✓ designed either with door or to allow for complete opening;
- ✓ fixed or adjustable keep-off rods prevent piglet losses caused by crushing and provide the sow with a comfortable resting area;
- ✓ self-supporting farrowing crate or 4-foot crate for optimum stability;
- ✓ low pen partitions in the area of the inspection aisle → for easy monitoring and a better overview;
- ✓ includes tiltable trough for thorough and easy cleaning (optional).



4-foot crate with cast iron slat beneath the sow



Tiltable trough





4-foot crate with cast iron slat beneath the sow and integrated, heated piglet nest

There is a special cover available for the piglets. The front part of the cover can be opened to facilitate monitoring. The rear part has an opening which can be used for a heat lamp or closed off with a sealing cap when the lamp is no longer required.



Piglet nest cover

BD free-movement pen: To fulfil special requirements regarding animal welfare, the farrowing pen is also available as free-movement pen. It includes a maternity bed for the sow, a piglet nest/heated

resting area, flooring and the pen partition. The maternity bed can be closed shortly before the expected farrowing date and during farrowing, which lowers the risk of piglets being crushed. This allows the

farm staff to remain up-to-date with the farrowing and ensure the piglets' protection. The maternity bed is opened after farrowing to provide ample room of movement for the sow.



BD free-movement pen with maternity bed → more freedom of movement for the sow



Important features

- ✓ minimum pen dimensions 2 x 2.6 m → 2.5 m² space for the sow;
- ✓ removable 4-leg maternity bed provides ample freedom of movement for the sow → animal-friendly housing;
- ✓ restraining of the sow close to the due date reduces the risk of piglet losses;
- ✓ specially designed door of the maternity bed allows the farm staff to provide easy assistance during farrowing;
- ✓ well thought-out design → easy to open and to close;
- ✓ side part of the maternity bed also acts as sudden-descent restrainer → piglet protection;
- ✓ piglet nest can be positioned close to the sow's head → better eye contact between the sow and the piglets;
- ✓ floor system can be laid out flexibly.

Piglet rearing

Housing and feeding systems

Big Dutchman piglet rearing pens are equipped either completely or partially with our animal-friendly and anti-slip plastic flooring system. Rounded edges protect the piglets against injuries. The optimum solid-to-void ratio ensures good manure penetration, thus keeping the floor clean and promoting healthy piglets.

The slats are available in two different sizes and can also be delivered with a slatted area of only 10 %. The flooring is easily and quickly assembled and the slats have a long service life. If required, heating plates can easily be incorporated. They consist of high-quality polymer concrete, plastic or GRP and are heated

either electrically or by hot water. The penning system consists of flexibly usable, dimension-independent plastic partitions. Door fittings and pen posts are made of stainless steel. Feed for the piglets can be supplied either in dry or liquid form.



Piglet rearing pen with PigNic Jumbo

If the DryRapid dry feeding system is used, the Big Dutchman automatic feeders are most appropriate.



Group pen with MultiPorc



Piglet rearing pen with the liquid feeding system HydroAir

If the piglets are to be fed with liquid feed, our HydroAir and HydroMix Sensor liquid feeding systems are the best feeding systems to use.



Piglet rearing pen with HydroMix Sensor



Big Dutchman.

Germany:
Big Dutchman Pig Equipment GmbH
 Postfach 1163 · 49360 Vechta
 Tel. +49 (0) 4447 801-0 · Fax -237
 big@bigdutchman.de
 www.bigdutchman.de

USA: Big Dutchman, Inc.
 Tel. +1 616 392 5981 · bigd@bigdutchmanusa.com
 www.bigdutchmanusa.com

Brazil: Big Dutchman (Brasil) Ltda.
 Tel. +55 16 2108 5310 · bdb@bigdutchman.com.br
 www.bigdutchman.com.br

Russia: 000 "Big Dutchman"
 Tel. +7 495 2295 171 · big@bigdutchman.ru · www.bigdutchman.ru

Asia/Pacific: BD Agriculture (Thailand) Ltd.
 Tel. +66 2 349 6531 · info@bigdutchman.com · www.bigdutchman.com.

China: Big Dutchman (Tianjin) Livestock Equipment Co., Ltd.
 Tel. +86 10 6476 1888 · bdcnsales@bigdutchman.com
 www.bigdutchman.cn