



Big Dutchman®








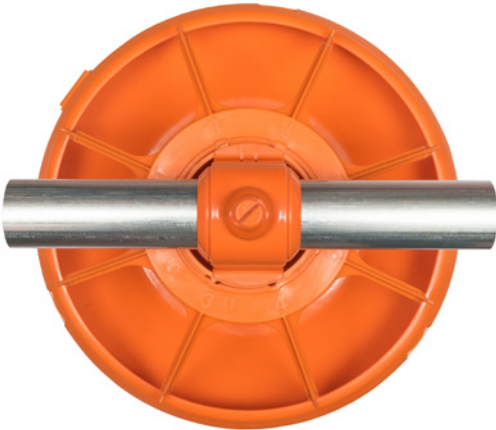


FLUXX™
Broiler Feeding System

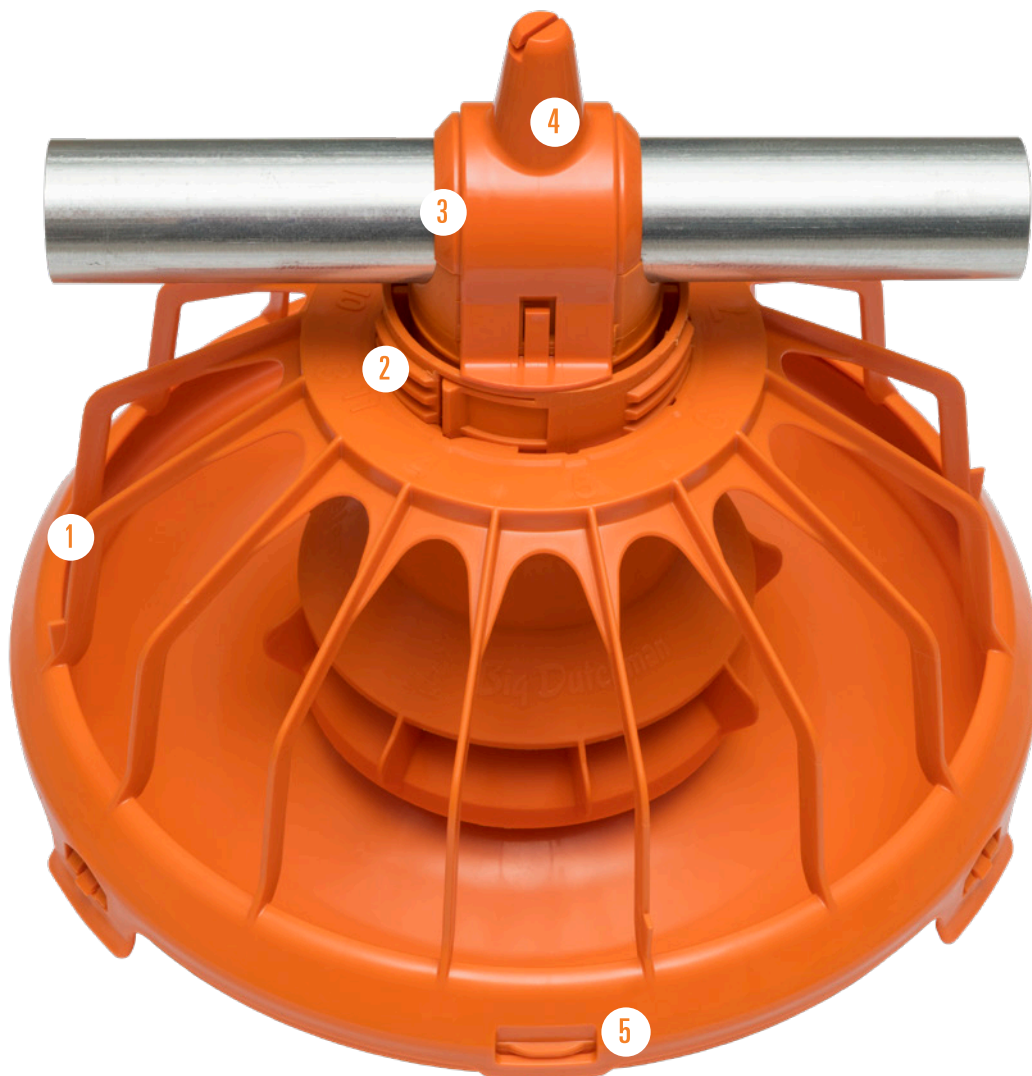
The patent pending FLUXX broiler feeding pan system continues to set the standard in **broiler feeding technology**. The FLUXX system has been **farm tested around the world**, showing it to be the best at faster starts and bigger birds.

The 14" pan allows for more feeding space, while the 16 arm design reduces feed waste and the 360° flood provides a large amount of feed at the edge of the pan, making it easily accessible.

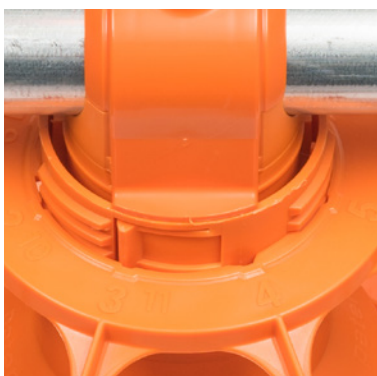
When a flooding pan is no longer required, simply winch the feeders off the floor and the feed adjust returns to the preset grow-out position. In the grow-out position the feed volume per pan is reduced, and the feed is delivered to the feeding area, giving **easy access to the feed**.

Each pan has the feature of a feed saver lip which reduces waste, along with the feed saver fins which will help keep the birds from wasting the feed, and the 360° rotation of the feeder that insures even feed distribution.

 <p>8 arm 14" pan - FLUXX 360 dish</p>	<p>TRUflood™ 360° high feed level flooding allowing feed accessibility, from day one.</p> 	<p>Up to 16 feed stations encourages the birds to eat straight into the pan.</p> 
 <p>16 arm 14" pan - FLUXX 360 dish</p>		
<p>NEW</p>  <p>8 arm 14" pan - FLUXX FX2 deep dish</p>	<p>Pan spins 360° providing even feed distribution in the pan.</p> 	<p>1 Internal lip is designed to give big birds easy feed access without wasting feed or injuring birds.</p> 
<p>NEW</p>  <p>16 arm 14" pan - FLUXX FX2 deep dish</p>		



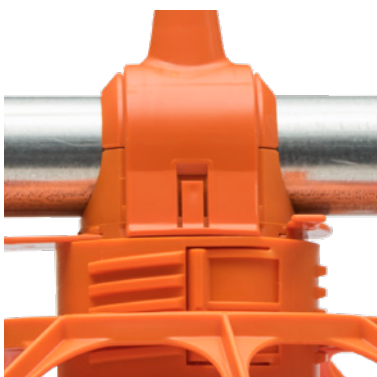
- 2** Feed levels are easily set with our "Spin'n lock" adjustment. Preset grow out adjustment is returned as soon as the system is winched off the litter, reducing labor.



- 4** Snap on top cap for easy installation and service, saving time and maintenance costs.



- 3** Swinging pan yields less bird injury and is easy to clean. Simply spray clean, open the bottom and let dry.



- 5** Additional dish latch to ensure the dish stays secured to the pan assembly.



DISH OPTIONS:



FLUXX 360 dish



FLUXX FX2 deep dish

The optional **FX2** deep dish is designed with the deepest point near the cone. This design allows for maximum feed to be presented with easy access for the birds. The internal lip design, and with the feed positioned near the cone, the birds are not able to scratch the feed out of the pan, resulting in less waste.

CONTROL PANS AND POWERDRIVE MOTOR:



Drive units and control pans:

- Reliable, energy-efficient, durable feed-drive units are available with adjustable mechanical or proximity switches
- Drive units feature a low-profile design that provides more winching headroom for cleaning
- Control pan light is available



HOPPER AND SWITCH:



Feeder and hopper unit:

- Galvanized steel or heavy-duty plastic available
- Permanently lubricated, sealed bearings give the unit an exceptionally long life
- Removable extension allows the unit to be winched up until the feeder reaches the desired height for easy clean-out
- Hopper wall design allows superior feed-out of all types of feed, providing a steady supply to the auger and faster filling of all pans

Mechanical high limit hopper switch:

- Sealed orange electrical box
- Adjustable paddle mechanism
- Reliable micro-switch



Reliable Big Dutchman components make the system complete

Big Dutchman storage solutions can be **easily configured to any application**, and all systems can be filled either pneumatically or by auger.

BULK FEED SILOS:

- Die-formed and constructed of galvanized metal for maximum strength and years of use

FLEX-VEY® AUGER FILL SYSTEMS:

- Carry feed from feed tanks to the house, moving up to 17,000 lbs. (7,700 kg) of feed per hour
- Single or tandem bin installations and can be built as single or double systems
- Customized to meet your needs
- High quality and extremely flexible spring steel
- Feed can be transported into the house around bends of up to 90° safely, quickly and without feed separation
- Universal application for each type of house
- Fast and easy assembly

NIPPLE WATERING SYSTEM:

- Low-pressure nipple drinker has a triple seal, reducing the probability of leaks
- Fully-enclosed watering system keeps dirt out and water clean

FEED WEIGH SCALES:

- Dependable, accurate scales for outside use
- Available in capacities of:
 - 5,000 lb. (2,300 kg)
 - 10,000 lb. (4,600 kg)
- Scale, feeder, and extension combination offers an alternative feeding system used inside the building

DIGITAL CONTROL UNITS:

- Independent fill and feed outputs allow up to 12 starts per day
- Skip-a-day feed and fill program available
- Battery back-up system maintains programs in memory in the event of a power failure



Big Dutchman can provide you with an **integrated environmental system**, configured to keep your house running at peak performance. Big Dutchman is uniquely qualified to design a system for you that maintains a clean, temperature controlled environment which, in turn, **consistently produces uniformly healthy birds**.

TUNNEL VENTILATION:

TUNNEL AIR INLET

- The air inlets for tunnel ventilation consist of large openings. These inlets are opened and closed in order to control the volume of air entering the house

FANS

- Fiberglass and Galvanized

COOLING

- Evaporative pad cooling
- Fogging systems

MINIMUM VENTILATION:

AIR INTAKE

- Plastic inlets installed in the ceiling or side-wall
- Galvanized inlets for side-wall installation
- Slot-Aire back to back inlets
- Continuous ceiling inlets
- Vent / Curtain machine

FANS

- Galvanized fans
- Fiberglass fans
- Ceiling fans
- Circulating fans

HEATING COMPONENTS

- SOLaire gas brooders
- Tube heaters
- Box heaters

CONTROLS:

Controlling the environment in your houses have never been so easy, and effective. ViperTouch is Big Dutchman's newly developed environment and production computer for use in poultry houses.



The automatic controls provided from ViperTouch allow you to **take complete control over the production, and the environment of your houses from one central location**.



For USA, Canada and South America please contact:

Big Dutchman, Inc. - USA

3900 John F Donnelly Dr • Holland, MI 49424 • USA

tel +1 616 582 4000 • fax +1 616 392 6188

www.bigdutchmanusa.com • info@bigdutchmanusa.com

Details are subject to change: 1/2019

86-00-6074