



Big Dutchman®



Housing Equipment

for modern piglet rearing and finishing

Innovative penning systems for your pig house

In addition to the most advanced feeding technology, Big Dutchman can also offer its customers animal-friendly, easy-to-clean systems for sow, nursery and finishing housing.

Our flexible modular system enables you to construct any type and size of pen, independent of the conditions on site and

the dimensions of the house. The Big Dutchman penning system includes:

- ✓ pen profiles made of PVC (in blue or light grey);
- ✓ pen supports, posts and reinforcing posts, all made of stainless steel;
- ✓ concrete partition ends;

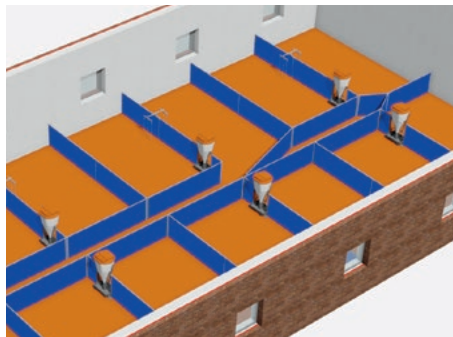
- ✓ several different types of locking doors.

Our experts are able to advise you how to put together the ideal penning system for your pig accommodation.

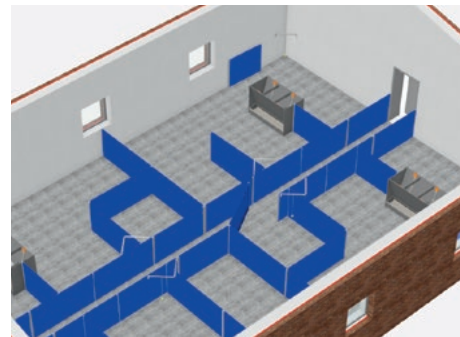
Housing options for piglets and finishing pigs

The penning system can be designed specifically to meet your requirements. If a dry feeding system is used, for example, the automatic feeders can either be mounted in the middle of the pen or in the pen partition. If the compartments are wider than 3.00 m at the aisle, installing a so-called “divided door” is recommended, no matter whether this concerns pens for piglets or finishing pigs. This special type of door facilitates moving the pigs in and out.

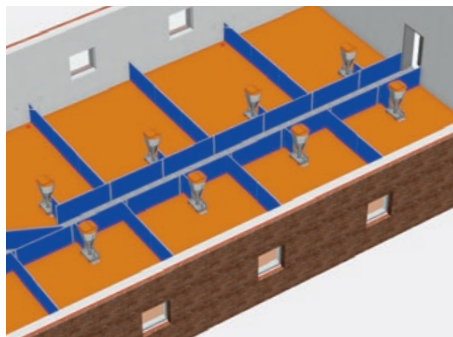
Thanks to the way the pens are designed, pigs can easily withdraw from the group, which increases comfort and quiet.



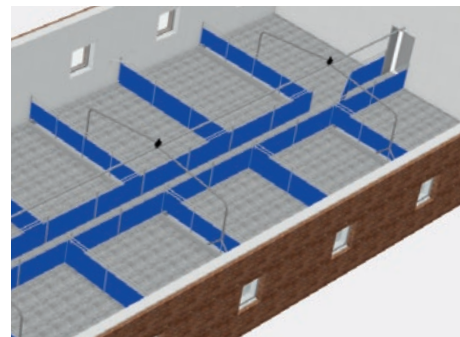
Piglet rearing pens with branch aisle and automatic feeders installed in the partitions



Pens for finishing including selection areas



Piglet rearing pens with automatic feeders installed in the pen

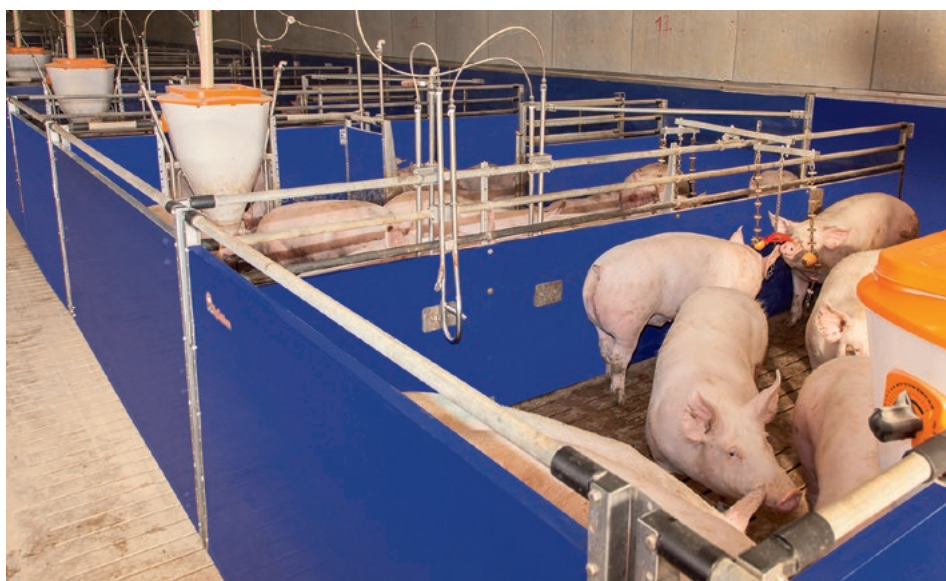


Pens for finishing with divided door and liquid feeding system

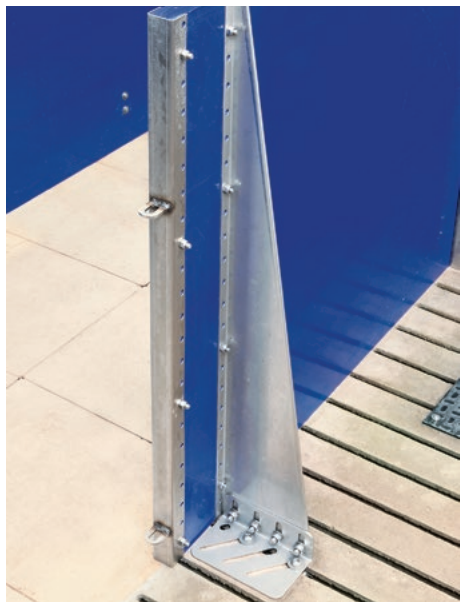
Pen profiles – easy to assemble, flexible, robust and hygienic

Big Dutchman pen profiles consist of individual, solid profile boards 35 mm thick and are available in several different heights: 500, 600, 750 and 1000 mm. This provides an easily cleaned pen division with no gaps or cracks to harbour dirt and disease. The profiles' length is not pre-determined. Instead, the profiles can be cut to the customer's specifications or can be cut to size directly on site.

Depending on the ventilation system and your requirements, the profiles can be used in conjunction with one or more galvanised 1" tubes. The tubing is mounted to the posts using special fixings. Divisions of 800, 1000 or 1100 mm in height or combinations thereof can easily be provided.



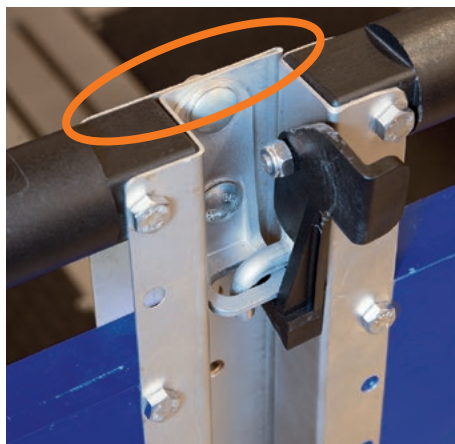
Reinforcing posts and concrete pen partition ends – very solid



Reinforcing post

Based on the size of the pen, special reinforcing posts or concrete partition ends may be used to provide a very

strong and stable partition – especially where sows or large groups of finishing pigs are housed.



Reinforced post at the door



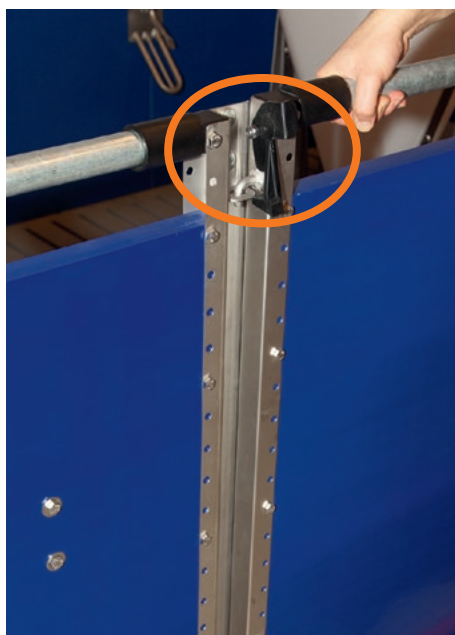
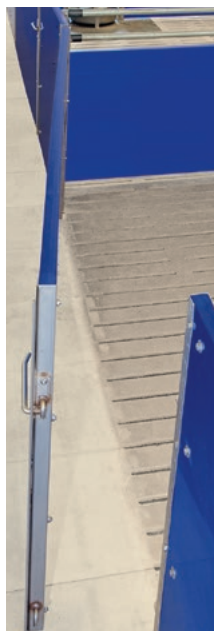
Concrete partition end for group pens

Divided door and single-handed locking – easy opening and closing of pen doors

If pen widths are more than 3 m, the divided door can be installed rather than using the whole pen wall as a door – making for easier pig handling. As an option, we can also offer a door that will open inwards to the pen at one end and outwards to the aisle at the other.



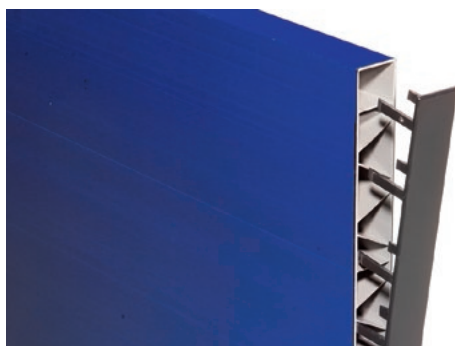
Divided door – opens towards the inside and the outside (optional)



Single-handed locking – drop latch with diagonal reinforcement falls automatically into locking position



Single-handed locking – handle and lock at the same time, very easy to use



Special inserts (optional) can be used to seal the end of pen profiles to provide better hygiene



Advantages of the Big Dutchman penning system

- ✓ the height of the solid walls can be chosen to suit your situation depending on the ventilation system or your preference;
- ✓ single-handed locking of pen doors improves ease of use;
- ✓ the small number of simple component parts allows for easy assembly, no external assistance required;
- ✓ long service life due to the use of durable materials such as stainless steel and rugged plastic in the animal area;
- ✓ low shipping volume saves money;
- ✓ single-piece surfaces are easy to clean; no niches to harbour dirt and disease mean better hygiene;
- ✓ suitable for all housing and management situations.

Room partitions made of plastic – hygienic and cost-effective

Big Dutchman also provides plastic partitions to separate individual rooms. This is a good alternative to brickwork partitions. The material is easily cleaned after every batch for optimum hygienic conditions.

The profile boards are either 35 or 50 mm thick and come in 500 mm wide panels. Either U- or L-shaped profiles are used to fix the boards to the ceiling or walls. These are also available in stainless steel if required.



Environmental enrichment – for pigs of all ages

Pigs need to be provided with a varied environment to help them meet their behavioural needs. Big Dutchman provides a range of products designed to meet these needs. This includes access to organic material and various chewable toys made of durable wood, plastic and rubber – usually suspended over the pens on chains. There is also a specially designed “foraging tower” from which the pigs can obtain small amounts of chopped straw.



Big Dutchman

Germany:
Big Dutchman Pig Equipment GmbH
 Postfach 1163 · 49360 Vechta
 Tel. +49(0)447 801-0 · Fax -237
 big@bigdutchman.de
 www.bigdutchman.de

USA: Big Dutchman, Inc.
 Tel. +1 616 392 5981 · bigd@bigdutchmanusa.com
 www.bigdutchmanusa.com

Brazil: Big Dutchman (Brasil) Ltda.
 Tel. +55 54 2101 5900 · bdbr@bigdutchman.com.br
 www.bigdutchman.com.br

Russia: 000 “Big Dutchman”
 Tel. +7 495 229 5161 · big@bigdutchman.ru · www.bigdutchman.ru

Asia/Pacific: BD Agriculture (Thailand) Ltd.
 Tel. +66 2 349 6531 · info@bigdutchman.com · www.bigdutchman.com

China: Big Dutchman (Tianjin) Livestock Equipment Co., Ltd.
 Tel. +86 10 6476 1888 · bdcnsales@bigdutchman.com
 www.bigdutchman.cn