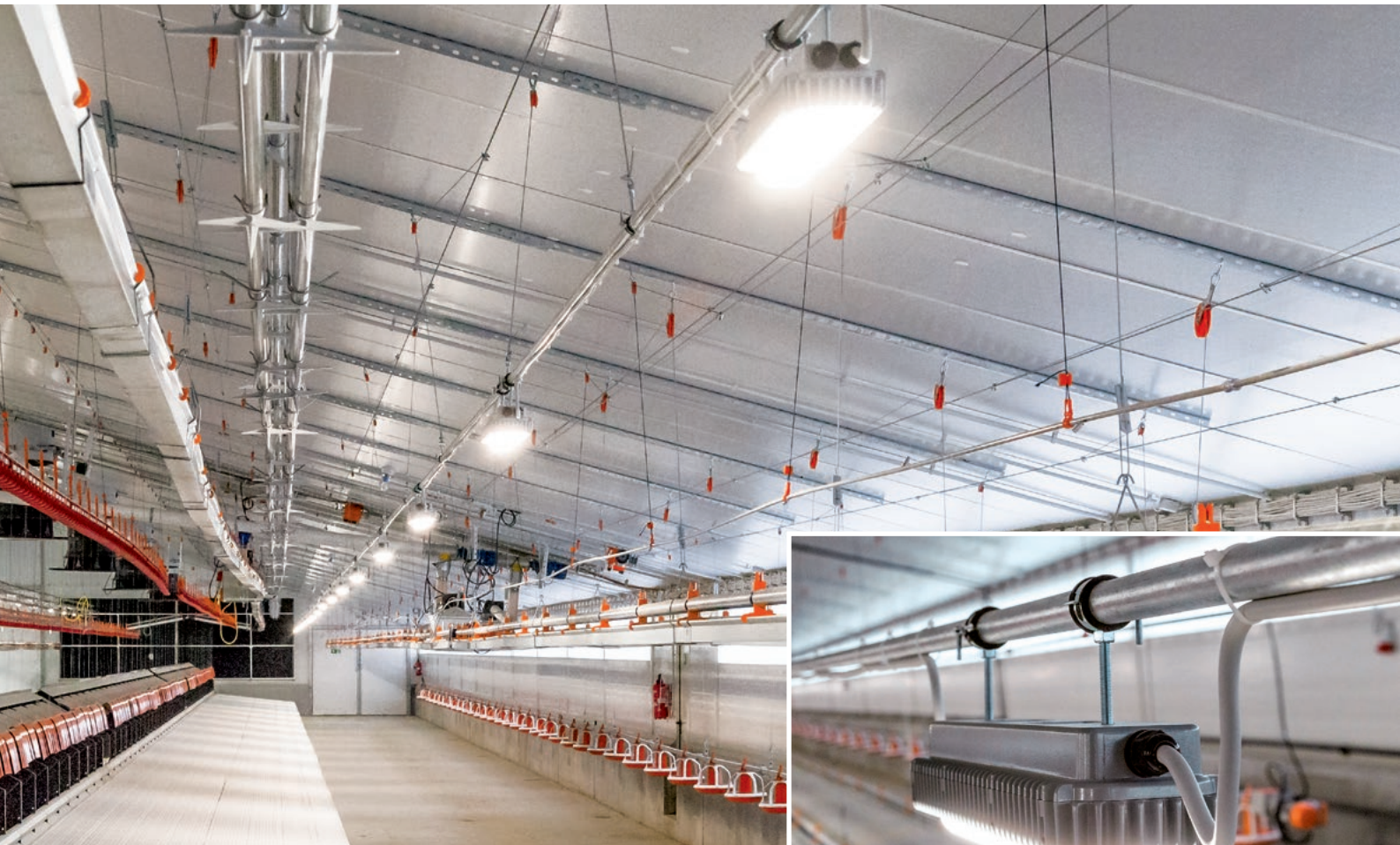


NEW!



Big Dutchman®



Zeus

The versatile moisture-proof LED lamp
– innovative and energy-efficient technology –

Zeus - the premium-quality, moisture-proof LED lamp

A well-developed lighting program significantly contributes to successful poultry production. An even illumination of all parts of a poultry house is guaranteed with the use of the innovative moisture-

proof lamp **Zeus**. With this 2-channel moisture-proof lamp, Big Dutchman has an exclusive high-quality brand product (OSRAM) available. The Zeus lamp can be used for multiple purposes thanks to LED

technology and a wide optical spectrum. Energy savings of up to 50 percent compared to conventional moisture-proof lamps are an unbeatable advantage.



Cool white light



Warm white light



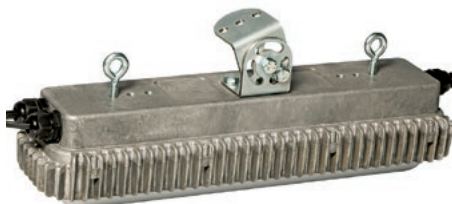
Red light with diffuser and ingress protection rating IP 67

Important advantages

- ✓ LED technology allows for long-lasting energy savings of up to 50 %;
- ✓ 0 to 100 % dimmable;
- ✓ zero flickering even at low light intensities;
- ✓ wide optical spectrum from warm white to cool white, infinitely variable;
- ✓ 2-channel moisture-proof LED lamp, e.g. to simulate sunrise and sunset;
- ✓ modular design consisting of a power supply unit, an LED driver and LED lamps;
- ✓ long service life of 50 000 hours and low maintenance requirements;
- ✓ rugged aluminium housing with an ingress protection rating of IP 65;
- ✓ exterior heat sink for optimum cooling;
- ✓ diffuser (optional) reduces dazzle effects, especially with low ceiling heights;
- ✓ can be installed at walls, ceilings or tubes.

Technical data

• Power	W	max. 32.5
• Input	V, Hz	90 - 264, 50/60
• Light output	lm	3 500
• Temperature	°C	from -20 to +45
• Frequency	Hz	16 000
• Colour temperature	K	2 700 - 4 000
• Beam angle	°	120
• Dimensions	mm	438 x 121 x 83
• Weight	kg	3.5
• Protection rating	IP 65 (optionally IP 67)	



Many different installation options

The moisture-proof lamp Zeus is available with different LED boards as an option. These boards can be exchanged on site without requiring a service technician, even subsequently. The following combinations of luminous colours can be delivered:

- warm white and cool white (standard)
- warm white and red
- warm white and blue



Big Dutchman.

Germany:
Big Dutchman International GmbH
 Postfach 1163 · 49360 Vechta
 Tel. +49(0)4447 801-0 · Fax -237
 big@bigdutchman.de
 www.bigdutchman.de

USA: Big Dutchman, Inc.
 Tel. +1 616 392 5981 · bigd@bigdutchmanusa.com
 www.bigdutchmanusa.com

Brazil: Big Dutchman (Brasil) Ltda.
 Tel. +55 16 2108 5300 · bdb@bigdutchman.com.br
 www.bigdutchman.com.br

Russia: 000 "Big Dutchman"
 Tel. +7 495 229 5161 · big@bigdutchman.ru · www.bigdutchman.ru

Asia/Pacific: BD Agriculture (Malaysia) Sdn. Bhd.
 Tel. +60 3 33 61 5555 · bdasia@bigdutchman.com · www.bigdutchman.com

China: Big Dutchman (Tianjin) Livestock Equipment Co., Ltd.
 Tel. +86 10 6476 1888 · bdcnsales@bigdutchman.com
 www.bigdutchman.cn