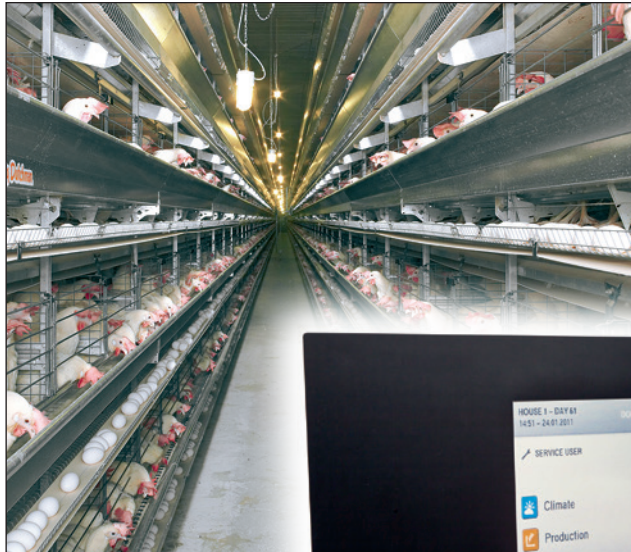




Big Dutchman®



ViperTouch

Climate and Production Computer

COMPLETE CLIMATE AND PRODUCTION CONTROL FOR YOUR POULTRY HOUSE... **AT YOUR FINGER TIPS**



- Simple operation via touch screen
- Ideal climate and production computer for all types of poultry production – broilers, broiler breeders, turkeys, ducks, layers –
- Adjustable operating modes: Basic, Flex or Profi Mode
- Speaks 16 languages – including yours
- Customizable home screen
- Integrated network interface
- Simple alarm management
- BigFarmNet-Manager with mobile and web access

A NEW EXPERIENCE IN TERMS OF COMFORT, SPEED AND PERFORMANCE

ViperTouch has a large, graphical color display on which all functions are clearly displayed. The symbols used in the main menus are easy to see and facilitate navigation.

In the standard version, the computer is delivered in English and German. There are however more than 16 different languages

available, such as Chinese, Danish, Romanian, Russian, Spanish, Thai. Data and settings can be saved on a USB stick (backup copy) by means of which it is also possible to install new software updates.

The standard version comes with 22 low power relays.

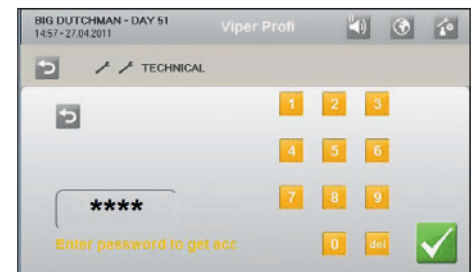
The extension box allows incorporation of 10 to 40 additional relay modules with or without manual control.

There are also relay modules available that can be used for direct connection of single-phase fans or motors with up to 30 amp.

DISPLAY EXAMPLES – MAIN MENU

ViperTouch allows the user to select and arrange all important data for climate and production control in the main menu. This way every customer quickly gets a customized overview of the situation in his barn.

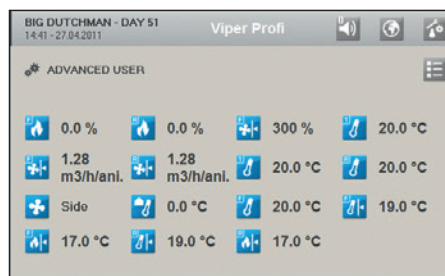
A password protection function ensures safety on up to three different levels. This means settings can only be changed by authorized persons.



Password function



Example 1: standard main menu



Example 2: extended main menu



Language selection

VIPER TOUCH AND BIGFARMNET-MANAGER

BigFarmNet-Manager is a PC program which allows the customer to list and visualize as well as process and control the barn climate and production data from his office PC. It is also possible to make and automatically transfer settings regarding feed, water and light to other houses in the same production mode.

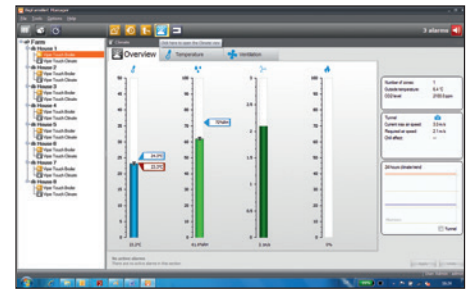
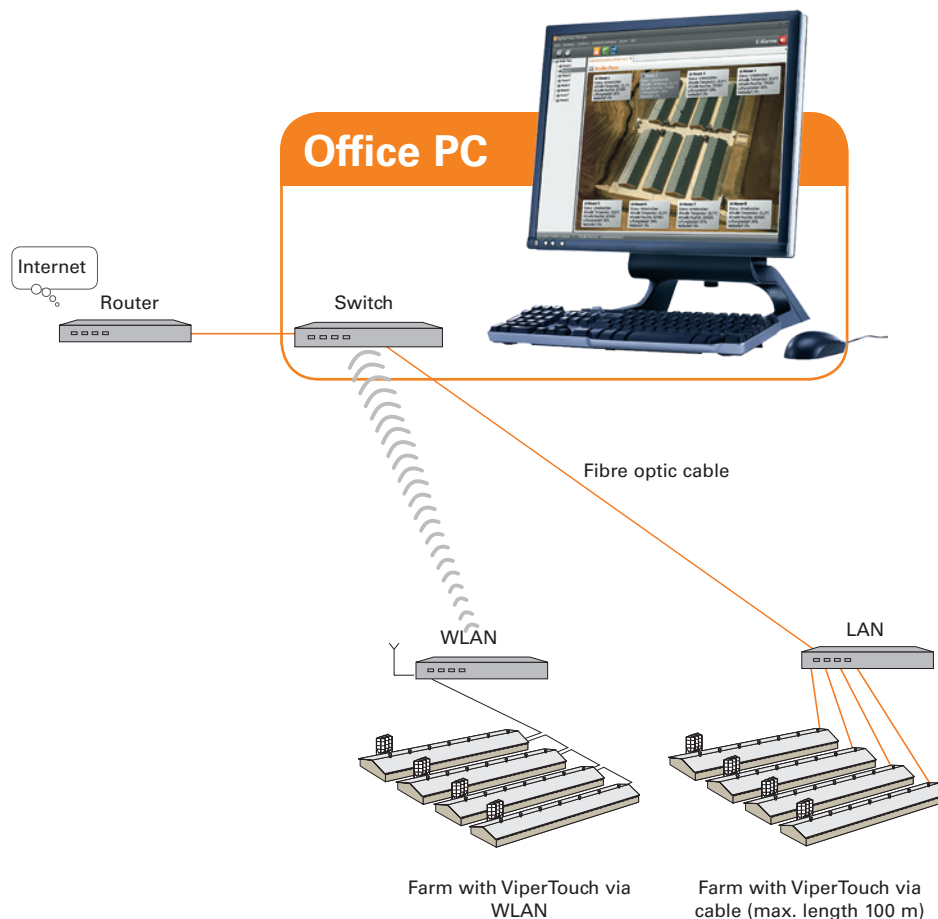
The new broiler module provides for an exact documentation of the

course of the batch. Several batches can be compared with each other or reference values concerning feed and water consumption or daily weight gains or losses.

The grower can take advantage of the full performance potential of a flock while saving costs, and achieve consistently good results at a high degree of efficiency.

THE ADVANTAGES AT A GLANCE

- The software uses simple, easy-to-understand symbols
- Quick data overview, both as graphs and as lists
- Detailed alarm log, history and analysis
- Fast connection to the office PC via LAN Ethernet and wireless networks
- Communication with existing computers via BFN-WebLink
- Use of standard IT components
- Remote access via RDP protocol



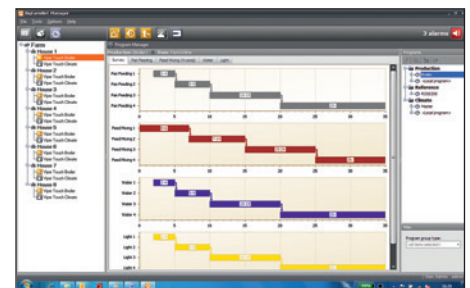
Current climate data



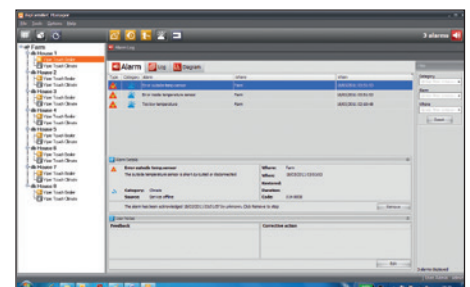
Overview climate



Current production data feed conversion broilers



Overview production



Overview alarms

ViperTouch is available in 5 different configuration levels – based on the requirements

ViperTouch	710	1520	2330	1500 / 2300	X30 / X 40
A) Maximum number of analogue inputs/outputs	7	15	23	15/23	
- outside temperature sensors	1	1	1	1	
- house temperature sensors, max.	8	8	8	8	
- humidity sensors, max.	2	2	2	2	
- pad sensors	2	2	2	2	
- negative pressure sensors	1	1	1	1	
- free sensors (NH ₃ , CO ₂ , O ₂ , air speed), max.	4	4	4	4	
- CO ₂ sensors for control of minimum ventilation*	1	1	1	1	
- external signal 0-10 V for speed control***	2	2	2	2	
- signal for CL 74 (servomotor at chimney 0-10 V)***	2	2	2	2	
- CL 74 V with feedback potentiometer for stepless exhaust air***	2	2	2	2	
- fresh air servomotor feedback potentiometer	6	6	6	6	
- servomotor tunnel feedback potentiometer	2	2	2	2	
- water metre	6	6	6	6	
- sensor cross auger	1	1	1	1	
- counter input for pulse scale	1	1	1	1	
- bird scales (full broiler functionality)	2 (4)	2 (4)	2 (4)	2 (4)	
- dimmer light, analogue output	4	4	4	4	
- passive light sensor (no control)	1	1	1	1	
- heating, analogue output	2	2	2	2	
- gas radiator	4	4	4	4	
- manual tunnel open	1	1	1	1	
B) Maximum number of digital outputs	12	22	32	30/40	
- contacts for heating system	4 (6**)	4 (6**)	4 (6**)	4 (6**)	
- contacts for gas radiators	4	4	4	4	
- contacts for pad cooling	2	2	2	2	
- contacts for spray cooling	2	2	2	2	
- contacts for soaking	1	1	1	1	
- contacts for wetting	1	1	1	1	
- CL 74 exhaust air chimney stepless (2 relays per servomotor)	2	2	2	2	
- CL 74/75 fresh air chimney Fumus/FAC (2 relays per motor)	1	1	1	1	
- side mode groups for exhaust air in MultiStep	14 (8****)	14 (8****)	14 (8****)	14 (8****)	
- tunnel mode groups for exhaust air in MultiStep	14	14	14	14	
- side mode groups for exhaust air on/off**	16	16	16	16	
- tunnel mode groups for exhaust air tunnel stages**	16	16	16	16	
- side inlets (2 relays per 1 servomotor)	6	6	6	6	
- tunnel inlets (2 relays per 1 servomotor)	2	2	2	2	
- emergency opening	1	1	1	1	
- fans for recirculating air (thermostat)	4	4	4	4	
- silo 1 and 2	yes	yes	yes	yes	
- silo 3 and 4 (full broiler functionality)	ja	ja	ja	ja	
- cross auger	1	1	1	1	
- Light on/off	4	4	4	4	
- timers	4	4	4	4	
- feeding	1	1	1	1	
- water valve	1	1	1	1	
- scale	1	1	1	1	
- soaking	1	1	1	1	
- targets for broiler breeder (full broiler functionality)	2 (9)	2 (9)	2 (9)	2 (9)	
- alarm	1	1	1	1	

It is not possible to use more analogue inputs or digital outputs than the number listed in row A and B.

The Viper scale module can be connected to all extension stages of ViperTouch.

Depending on the type of ViperTouch stepless fans can be controlled by means of an internal or external triac.

* only in Profi mode ** only in Basic or Flex mode *** only in Profi or Flex mode **** two-zone control in Profi mode



Big Dutchman®

For North, Central and South America please contact:

Big Dutchman, Inc. - USA

3900 John F Donnelly Dr • Holland, MI 49424 • USA

tel +1 616 582 4000 • fax +1 616 392 6188

www.bigdutchmanusa.com • info@bigdutchmanusa.com

Details are subject to change: 1/13

86-00-6141