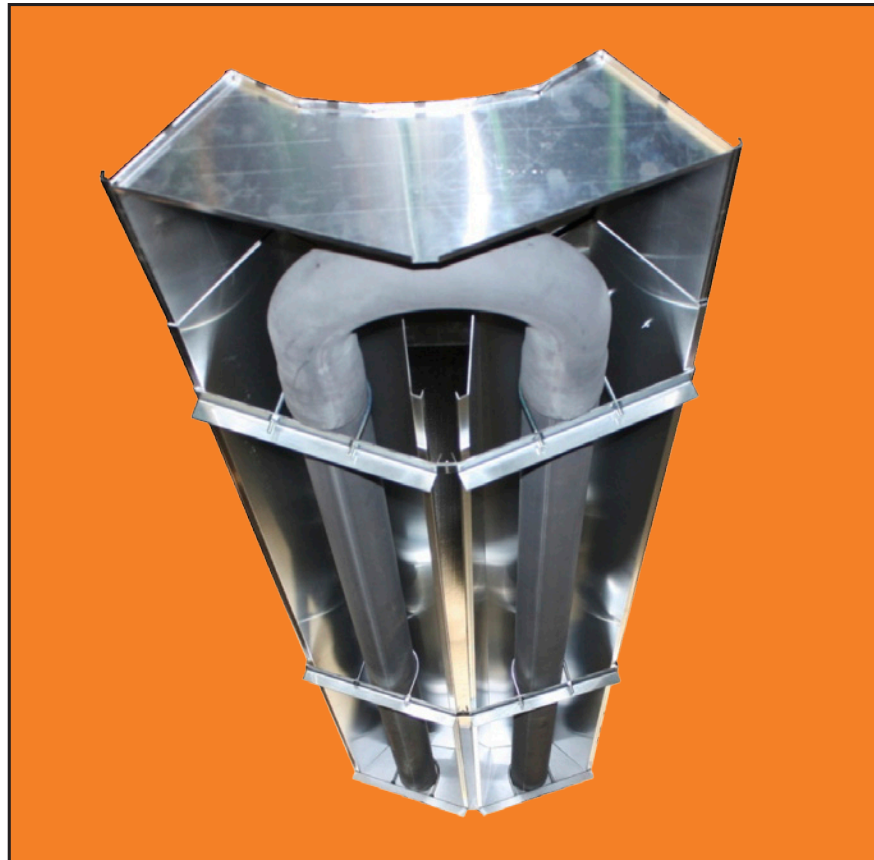




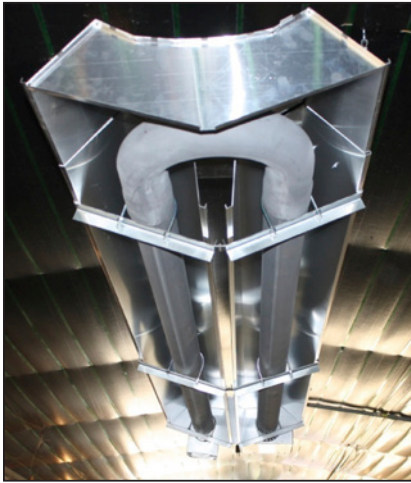
**Big Dutchman.**<sup>®</sup>



**BIGFOOT**

Tube Heater

### 19° ANGLE OPTIMIZED REFLECTOR ANGLE:



- Better radiant throw
- Less convective wash
- Higher radiant output and more fuel efficient
- Faster to put heat on the floor
- Low clearances to combustibles above
- Unique U-bend reflector directs more heat from the end of the tube

### HEAT PATTERN

- Even temperature distribution
- Allows birds warm access to food and water
- 4" Diameter tubes create large radiant surface to emit heat to the outside wall
- Bigger footprint than other competitive units

## Reliable Big Dutchman components make the system complete

Big Dutchman can provide you with an **integrated environmental system**, configured to keep your house running at peak performance. Big Dutchman is uniquely qualified to design a system for you that maintains a clean, temperature controlled environment which, in turn, **consistently produces uniformly healthy birds.**

### TUNNEL VENTILATION:

#### TUNNEL AIR INLET

- The air inlets for tunnel ventilation consist of large openings. These inlets are opened and closed in order to control the volume of air entering the house

#### FANS

- Fiberglass and Galvanized

#### COOLING

- Evaporative pad cooling
- Fogging systems



### MINIMUM VENTILATION:

#### AIR INTAKE

- Plastic inlets installed in the ceiling or side-wall
- Galvanized inlets for side-wall installation
- Slot-Aire back to back inlets
- Continuous ceiling inlets
- Vent / Curtain machine

#### FANS

- Galvanized fans
- Fiberglass fans
- Ceiling fans
- Circulating fans

#### HEATING COMPONENTS

- SOLaire gas brooders
- Tube heaters
- Box heaters



### CONTROLS:

**Controlling the environment in your houses have never been so easy, and effective.** ViperTouch is Big Dutchman's newly developed environment and production computer for use in poultry houses.

The automatic controls provided from ViperTouch allow you to **take complete control over the production, and the environment of your houses from one central location.**



For USA, Canada and South America please contact:

Big Dutchman, Inc. - USA

3900 John F Donnelly Dr • Holland, MI 49424 • USA

tel +1 616 582 4000 • fax +1 616 392 6188

www.bigdutchmanusa.com • info@bigdutchmanusa.com

Technical details are subject to change.