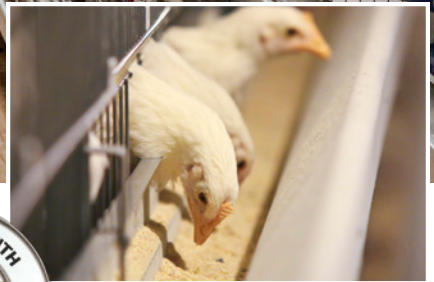




# Big Dutchman®



## UniVENT Starter

Manure belt battery cages for rearing pullets



## UNIVENT STARTER – BATTERY CAGE FOR UNIFORM PULLETS AND DRY MANURE

How your flock performs begins with how they start. The UniVENT Starter gets your flock started right, providing the foundation for a healthy and productive flock.

The UniVENT Starter stands for unsurpassed quality and reliability, meeting a variety of requirements from all our customers in an ideal way, and is available with or without ventilation.

To satisfy the different needs of day-olds and pullets, our rearing battery cages consist of two different areas, the start tier and the grow tier.



5 days old



2 weeks old



6 weeks old



12 weeks old

**START TIER FEED SUPPLY:** The chicks can easily reach the feed in the trough positioned outside of the cage from day one. The most important advantage of this is that the chicks can reach the feed without standing in it. Access to the feed is centrally controlled by the feed gate and is determined by the bird's age, while a specially designed inner rim minimizes feed waste.

The Big Dutchman CHAMPION® feed chain provides a consistent and reliable supply of feed, which can be easily adjusted depending on your specific needs.

**GROW TIER FEED SUPPLY:** At this point the birds are eating over the feed gate directly from the feed trough until they are moved out during their 18th week of life.

Chain speeds of 40 ft/min or 60 ft/min are available, producing uniform growth among the pullets.



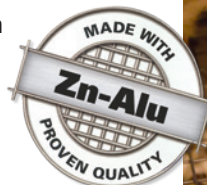
**START TIER WATER SUPPLY:** The nipple drinker line in the start tier can be adjusted in height centrally according to the size of the birds, providing an adequate water supply from day one. The drinker line is suspended every 23.63 inches (60 cm) ensuring good stability. In the standard version, there are 3 nipples with drip water cups in each cage. The number of nipples per cage can be increased as an option.

**GROW TIER WATER SUPPLY:** In grow tiers the nipple drinker is installed at the back wall of the cage where each bird can easily reach four stainless steel nipples. We also recommend using a rinsing system with a ball tank.

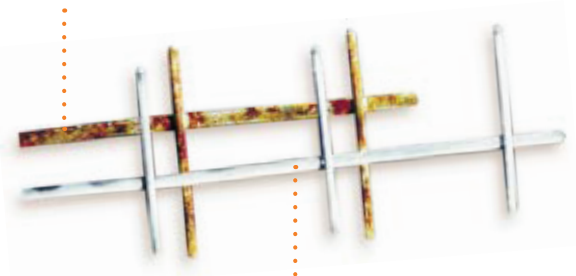


Drinker line is elevated as the flock matures

**THE Zn-Alu ADVANTAGE:** Zn-Alu wire coating is standard on all our systems, resulting in a more durable anti-corrosive material. Not only will your system last longer with Zn-Alu, but your cages will remain cleaner, free from impurities and undesirable substances, which will provide a healthier surface for your flock to stand on and live in.



Wire coated with zinc



Wire coated with Zn-Alu

## MAXIMIZE LAYING PERFORMANCE AND EGG QUALITY WITH THE UNIVENT STARTER

The UniVENT Starter raises premium pullets with the following benefits:

- Uniform feed supply
- Rapid feed distribution
- No manure in feed trough
- Sufficient and hygienic drinking water
- Wire partitions for improved bird control
- High functional reliability
- Easy to operate
- Reduction of ammonia emissions

### MANURE DRYING:

Air is channelled through the air ducts into the individual cages to the birds and the manure. Fresh air can be warmed up with an air mixer (mixing fresh air with house air) or heat exchanger, with each system controlled automatically. This additional ventilation aids in bird comfort and a more uniform temperature throughout the house.

### MANURE BELT IDLER UNIT:

In addition to the standard system, Big Dutchman offers a cleaning auger, which also cleans the manure belt during its return circuit.



Idler roller for manure belt (Standard)



Idler roller for manure belt with cleaning auger

**MANURE REMOVAL:** The manure drops on continuous polypropylene belts underneath the cages, where the air reaches the manure via air ducts, which are located above the manure belts to assist with manure drying. Proper manure drying reduces ammonia emissions in the house, minimizing any harm to the environment, and promotes the bird's well-being while reducing bird mortality.



Dry manure store

### ADVANTAGES AT A GLANCE:

- Optimal bird comfort is achieved with the increased air movement afforded by wire partitions and the optional air duct system
- Temperatures are uniform throughout the house regardless of outside temperature differences
- Ammonia and odor emissions are significantly reduced
- Fly population and the cost of its control are dramatically reduced
- Lower energy costs



Manure is loaded directly on trucks



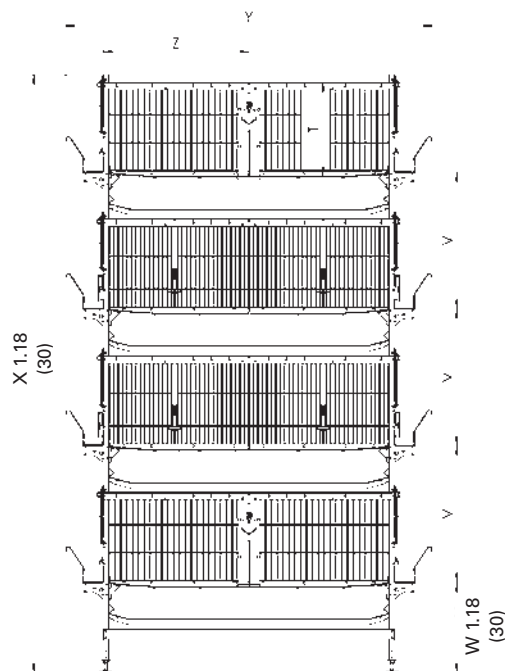
Manure removal end set with manure chute

### ADDITIONAL ADVANTAGES:

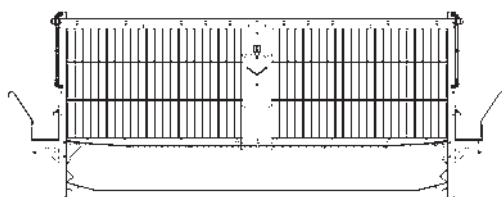
- Simple assembly of 3 to 8 tiers
- Feed troughs are mounted on supports for trough stability and long service life
- Feed trough with inner rim maximizes feed conversions
- Upper walk way for batteries with more than 5 tiers provides easy bird control
- Reduced heating expenses and investment costs per bird are achieved with systems of 4 or more tiers because of increased density
- Significantly low bird mortality during rearing

# Technical Data

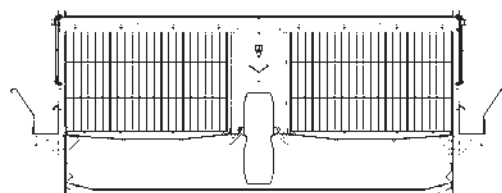
Type of system	UV-S 680/a	UV-S 630A
<b>System height (X) in inch (mm)</b>		
3 tiers	78.4 (1990)	83.1 (2110)
4 tiers	101.6 (2580)	107.9 (2740)
6 tiers	155.9 (3960)	165.4 (4200)
7 tiers	179.2 (4550)	190.2 (4830)
8 tiers	202.4 (5140)	215.0 (5460)
Tier distance (V) in mm / inch	23.3 (590)	24.8 (630)
Height 1st tier (W) in mm / inch	15.4 (390)	16.6 (420)
Battery width (Y) in mm / inch	66.9 (1700)	66.9 (1700)
Cage depth (Z) in mm / inch	26.8 (680)	24.8 (630)
Cage height (T) in mm / inch	16.0 (405)	16.3 (415)
Cage length in mm / inch	47.5 (1206)	47.5 (1206)
Cage surface inch <sup>2</sup> (cm <sup>2</sup> )	1271 (8200)	1178 (7598)
<b>Birds/cage</b>		
* With 38.75 in <sup>2</sup> /bird (250cm)	30	28
* With 46.50 in <sup>2</sup> /bird (300cm)	27	25
* With 51.2 in <sup>2</sup> /bird (330cm)	25	23
<b>Rows/Passage in inch (cm)</b>		
* When house is 12 m wide	4/40.9 (4/104)	4/40.9 (4/104)
* When house is 14 m wide	5/36.1 (5/91.7)	5/36.1 (5/91.7)



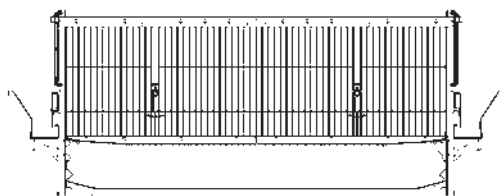
## Cage cross sections



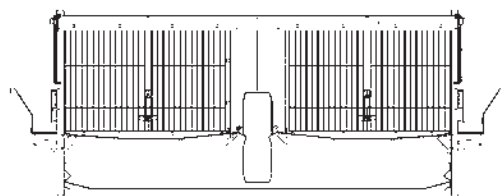
UV-S 680 – Grow tier without air duct



UV-S 630A – Grow tier with large air duct



UV-S 680 – Start tier without air duct



UV-S 630A – Start tier with large air duct

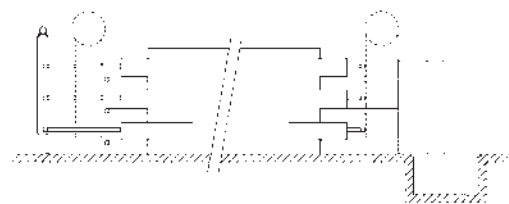
### Our recommendation:

Compatibility among the individual components of a pullet house including cages, house ventilation and manure storage is essential to achieve optimal results.

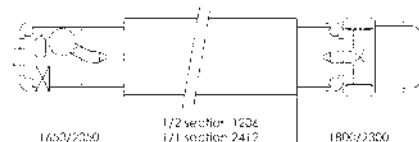
Allow our specialists to advise on application of Big Dutchman equipment and technology to successfully manage flocks.

## Planning example UV-S 630 A

Side view



Top view



**Big Dutchman**

For USA, Canada and South America please contact:

Big Dutchman, Inc. - USA

3900 John F Donnelly Dr • Holland, MI 49424 • USA

tel +1 616 582 4000 • fax +1 616 392 6188

www.bigdutchmanusa.com • info@bigdutchmanusa.com

Details are subject to change: 7/2017

86-00-6022