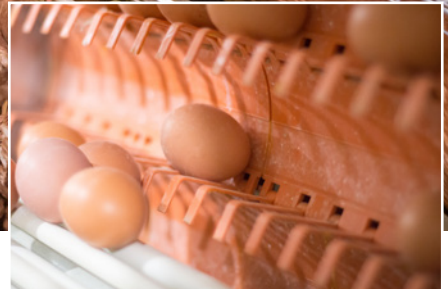




Big Dutchman®



NATURA60

Select access multi tier aviary for barn and free range egg production

NATURA60 - Flexible, efficient and profitable

The NATURA60 is Big Dutchman's aviary system for layers, designed to maximize production, minimize flock stress, and reduce management labor.

NATURA60 PROVIDES THE FOLLOWING ADVANTAGES:

- Easy access to feed and water
- Small flock size into the laying phase
- Minimizes the number of mis-laid eggs
- Special stairways provide access to the different levels throughout the aviary at all times
- Hens reach the scratching area through large openings along the entire length of the system
- Interior partitions are installed every 7.9' ft which makes group sizes more manageable
- Longitudinal egg belts provide gentle egg transportation
- Easy collection of system eggs from the inspection aisle
- Automated folding doors provide access to the entire system at the lowest level with little effort
- Interior staircase makes each row independent, allowing for housing flexibility

PHASE OF FAMILIARIZATION:

After the hens are moved in, the system remains closed during the familiarization phase, allowing the hens to get accustomed their new environment. Feed and water is strategically placed to promote hen movement throughout the system.

The interior partition installed every 7.9' makes for more manageable group sizes up to 152 birds, ensuring the nests are evenly used right from the start. The system can be fully opened after the familiarization phase, allowing for more space for the hens to act out their natural behaviors.



FAMILIARIZATION PHASE: The system remains closed



LAYING PHASE: The system is open



INTERIOR STAIRCASE:

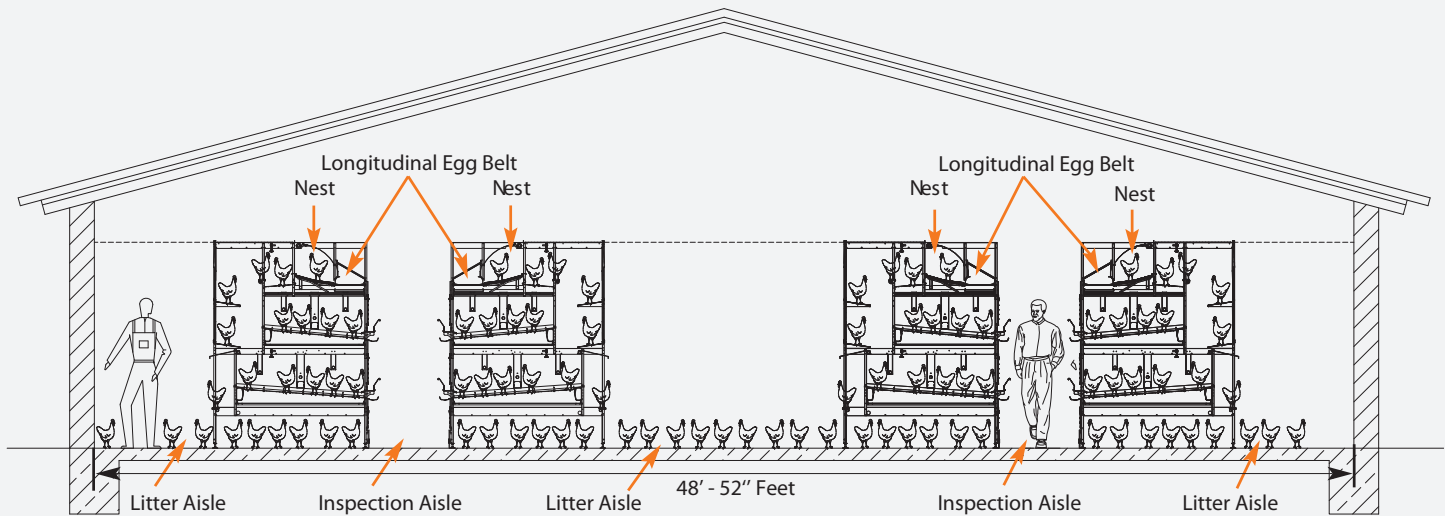
Hens have easy access to all levels, all the time.

4 TIER SYSTEM:

- Nesting in the top tier
- Feeding in middle tier
- Feed and water in the lower tier
- Scratch and dust bathing on floor level
- Perching throughout
- Entry at lowest level provides easy access to the scratching area



The system design provides a calming effect for the entire flock



BIRD-FREE INSPECTION AISLE:

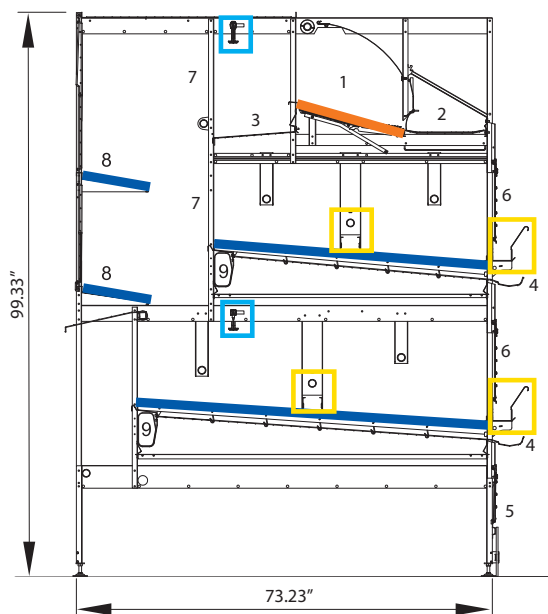
A unique characteristic of the NATURA60 is its bird-free inspection aisle, which provides the following advantages:

- Moving birds in and out of the system
- Daily supervision of birds
- Observation of the feed level
- Easier access to nests and longitudinal egg belts
- Able to walk the aisle without driving the birds
- Better uniformity of light throughout the system



Inspection aisle

NATURA60 PROFILE:



1. Laying nest
2. Longitudinal egg belt 13.75" with cover
3. Nest staging area
4. Egg channel for mislaid eggs
5. Sliding door and separation to scratching area
6. Sliding door for easy bird supervision
7. Folding grill for effortless bird supervision
8. Interior scratch area
9. Optional air

The arrangement of the different areas of activity encourages bird movement within the system.

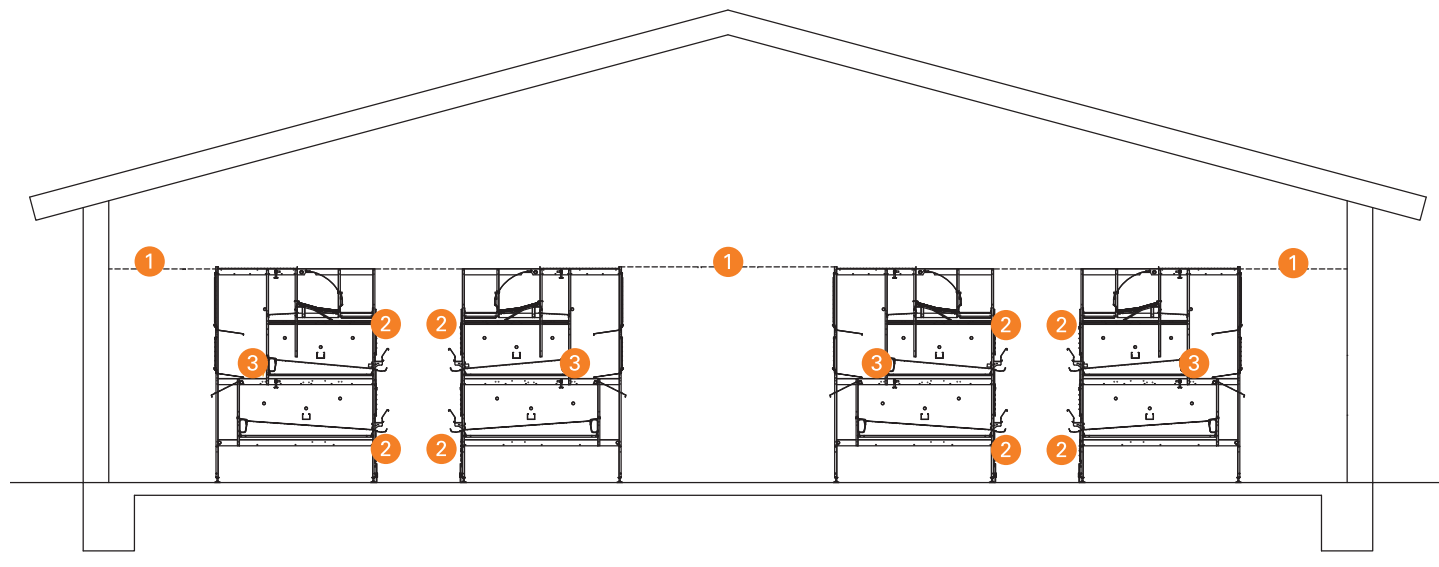
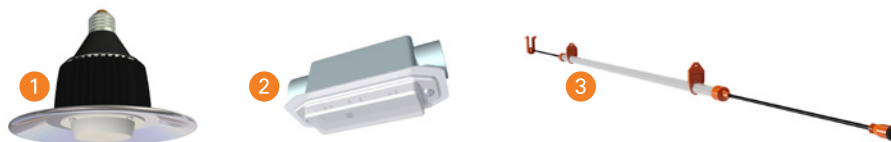
- Nest surface
- Watering
- Feeding
- Usable surface

Section length: 94.96" (241.2cm)

CORRECT LIGHTING FOR OPTIMUM DISTRIBUTION OF LIGHT WITHIN THE HOUSE:

To ensure the success of your house, Big Dutchman's lighting program uses three different sources of light coordinated by a lighting system:

- 1 LED 12 watt lighting - dim to red
- 2 LED 3 watt lighting - dim to red
- 3 LED lighting tube light - dim to red



RAISED INSPECTION AISLE

To utilize 100% of the house surface as a scratching area, Big Dutchman offers a raised inspection aisle, allowing the space to be used by the hens and the farm staff at the same time, while maintaining the advantages of a bird-free inspection aisle.



Raised inspection aisle allows for easy inspection of nests and longitudinal egg belt



Easy collection of mis-laid system eggs on second level



Grid elements can be easily folded up for inspection purposes



For USA, Canada and South America please contact:

Big Dutchman, Inc. - USA

3900 John F Donnelly Dr • Holland, MI 49424 • USA

tel +1 616 582 4000 • fax +1 616 392 6188

www.bigdutchmanusa.com • info@bigdutchmanusa.com

Technical details are subject to change. 7/2017

86-00-6017